

bs-16670R**[Primary Antibody]****INPP5A Rabbit pAb****BioSS**
ANTIBODIES

www.bioss.com.cn

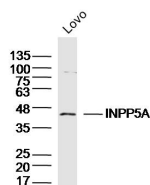
sales@bioss.com.cn

techsupport@bioss.com.cn

400-901-9800

— DATASHEET —

Host: Rabbit	Isotype: IgG	Applications: WB (1:500-2000)
Clonality: Polyclonal		Reactivity: Human (predicted: Mouse, Rat, Pig, Cow, Chicken, Dog, Horse)
GeneID: 3632	SWISS: Q14642	Predicted MW.: 48 kDa
Target: INPP5A		Subcellular Location: Cell membrane
Immunogen: KLH conjugated synthetic peptide derived from human INPP5A: 31-130/412.		
Purification: affinity purified by Protein A		
Concentration: 1mg/ml		
Storage: 0.01M TBS (pH7.4) with 1% BSA, 0.02% Proclin300 and 50% Glycerol. Shipped at 4°C. Store at -20°C for one year. Avoid repeated freeze/thaw cycles.		
Background: The protein encoded by this gene is a membrane-associated type I inositol 1,4,5-trisphosphate (InsP3) 5-phosphatase. InsP3 5-phosphatases hydrolyze Ins(1,4,5)P3, which mobilizes intracellular calcium and acts as a second messenger mediating cell responses to various stimulation. [provided by RefSeq, Jul 2008]		

— VALIDATION IMAGES —

Sample: LOVO Cell (Human) Lysate at 40 ug
Primary: Anti-INPP5A (bs-16670R) at 1/300
dilution Secondary: IRDye800CW Goat Anti-Rabbit IgG at 1/20000 dilution Predicted band size: 48 kD Observed band size: 46 kD