

phospho-TFRC (Ser24) Rabbit pAb

Catalog Number: bs-16668R

Target Protein: phospho-TFRC (Ser24)

Concentration: 1mg/ml

Form: Liquid

Host: Rabbit

Clonality: Polyclonal

Isotype: IgG

Applications: **Flow-Cyt** (1ug/Test)

Reactivity: Human (predicted: Mouse, Rat, Pig, Cow, Dog, Horse)

Predicted MW: 85 kDa

Subcellular Secreted ,Cell membrane

Locations:

Entrez Gene: 7037

Swiss Prot: P02786

Source: KLH conjugated synthesised phosphopeptide derived from human Transferrin Receptor around the phosphorylation site of Ser24: RF(p-S)LA.

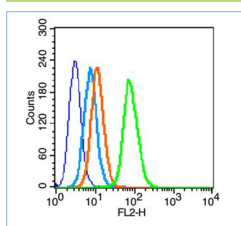
Purification: affinity purified by Protein A

Storage: 0.01M TBS (pH7.4) with 1% BSA, 0.02% Proclin300 and 50% Glycerol.

Shipped at 4°C. Store at -20°C for one year. Avoid repeated freeze/thaw cycles.

Background: This gene encodes a cell surface receptor necessary for cellular iron uptake by the process of receptor-mediated endocytosis. This receptor is required for erythropoiesis and neurologic development. Multiple alternatively spliced variants have been identified. [provided by RefSeq, Sep 2015]

VALIDATION IMAGES



Blank control (blue line): HL60(fixed with 70% ethanol Overnight at 4°C). Primary Antibody (green line): Rabbit Anti-phospho-Transferrin Receptor (Ser24) antibody (bs-16668R), Dilution: 1µg /10⁶ cells; Isotype Control Antibody (orange line): Rabbit IgG . Secondary Antibody (white blue line): Goat anti-rabbit IgG-PE, Dilution: 1µg /test.

PRODUCT SPECIFIC PUBLICATIONS

[IF=3.9] Cuicui Zhuang, et al. Escherichia coli infection induces ferroptosis in bovine mammary epithelial cells by activating the Wnt/ β -catenin pathway-mediated mitophagy. MITOCHONDRION. 2024 Sep;78:101921 WB ; Bovine . 38885732