

bs-16804R**[Primary Antibody]****KPNA4 Rabbit pAb****BioSS**
ANTIBODIES

www.bioss.com.cn

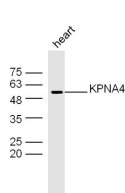
sales@bioss.com.cn

techsupport@bioss.com.cn

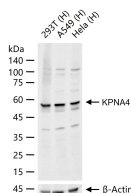
400-901-9800

— DATASHEET —

Host: Rabbit Clonality: Polyclonal GeneID: 3840 Target: KPNA4 Immunogen: KLH conjugated synthetic peptide derived from human KPNA4: 1-100/521. Purification: affinity purified by Protein A Concentration: 1mg/ml Storage: 0.01M TBS (pH7.4) with 1% BSA, 0.02% Proclin300 and 50% Glycerol. Shipped at 4°C. Store at -20°C for one year. Avoid repeated freeze/thaw cycles. Background: The nuclear import of karyophilic proteins is directed by short amino acid sequences termed nuclear localization signals (NLSs). Karyopherins, or importins, are cytoplasmic proteins that recognize NLSs and dock NLS-containing proteins to the nuclear pore complex. The protein encoded by this gene shares the sequence similarity with Xenopus importin-alpha and Saccharomyces cerevisiae Srp1. This protein is found to interact with the NLSs of DNA helicase Q1 and SV40 T antigen. [provided by RefSeq, Jul 2008]	Isotype: IgG SWISS: O00629	Applications: WB (1:500-2000) Reactivity: Human, Mouse (predicted: Rat, Cow, Chicken, Horse) Predicted MW.: 57 kDa Subcellular Location: Cytoplasm
---	---	--

— VALIDATION IMAGES —

Sample: heart (mouse) Lysate at 40 ug Primary:
 Anti-KPNA4(bs-16804R) at 1/300 dilution
 Secondary: IRDye800CW Goat Anti-Rabbit IgG at
 1/20000 dilution Predicted band size: 57 kD
 Observed band size: 57 kD



25 ug total protein per lane of various lysates
 (see on figure) probed with KPNA4 polyclonal
 antibody, unconjugated (bs-16804R) at 1:1000
 dilution and 4°C overnight incubation. Followed
 by conjugated secondary antibody incubation at
 r.t. for 60 min.

— SELECTED CITATIONS —

- **[IF=4.175]** Junmin Li. et al. Circ_ZFR contributes to the paclitaxel resistance and progression of non-small cell lung cancer by upregulating KPNA4 through sponging miR-195-5p. Cancer Cell Int. 2021 Dec;21(1):1-15 WB ;Human. 33407505