

**bs-16785R**

**[ Primary Antibody ]**

## KLRF2 Rabbit pAb

**BioSS**  
ANTIBODIES

www.bioss.com.cn

sales@bioss.com.cn

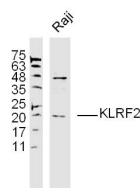
techsupport@bioss.com.cn

400-901-9800

### — DATASHEET —

<b>Host:</b> Rabbit	<b>Isotype:</b> IgG	<b>Applications:</b> WB (1:500-2000)
<b>Clonality:</b> Polyclonal		<b>Reactivity:</b> Human
<b>GeneID:</b> 100431172	<b>SWISS:</b> D3W0D1	
<b>Target:</b> KLRF2		
<b>Immunogen:</b> KLH conjugated synthetic peptide derived from human KLRF2: 21-120/201. < Extracellular >		<b>Predicted MW.:</b> 24 kDa
<b>Purification:</b> affinity purified by Protein A		<b>Subcellular Location:</b> Cell membrane
<b>Concentration:</b> 1mg/ml		
<b>Storage:</b> 0.01M TBS (pH7.4) with 1% BSA, 0.02% Proclin300 and 50% Glycerol. Shipped at 4°C. Store at -20°C for one year. Avoid repeated freeze/thaw cycles.		
<b>Background:</b> C-type lectin-like receptor involved in natural killer cell mediated cytotoxicity and cytokine secretion in keratinocytes via its interaction with CLEC2A.		

### — VALIDATION IMAGES —



Sample: Raji (human) cell Lysate at 40 ug  
Primary: Anti-KLRF2(bs-16785R) at 1/300 dilution  
Secondary: IRDye800CW Goat Anti-Rabbit IgG at 1/20000 dilution  
Predicted band size: 24 kD  
Observed band size: 20 kD