

bs-0961R**[Primary Antibody]****Bioss**
ANTIBODIES

www.bioss.com.cn

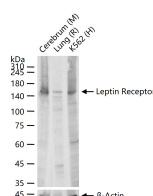
sales@bioss.com.cn

techsupport@bioss.com.cn

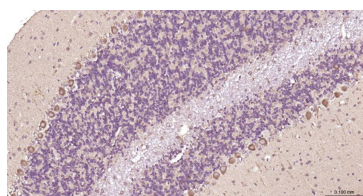
400-901-9800

Leptin receptor Rabbit pAb**— DATASHEET —**

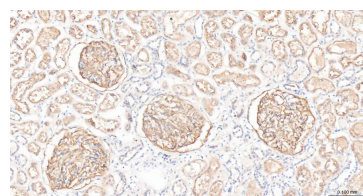
Host: Rabbit	Isotype: IgG	Applications: WB (1:500-2000) IHC-P (1:50-200) IHC-F (1:50-200) IF (1:50-200)
Clonality: Polyclonal		
GeneID: 3953	SWISS: P48357	
Target: Leptin receptor		Reactivity: Human, Mouse, Rat
Immunogen: KLH conjugated synthetic peptide derived from human Leptin receptor: 501-600/1165. < Extracellular >		
Purification: affinity purified by Protein A		
Concentration: 1mg/ml		Predicted MW.: 130 kDa
Storage: 0.01M TBS (pH7.4) with 1% BSA, 0.02% Proclin300 and 50% Glycerol. Shipped at 4°C. Store at -20°C for one year. Avoid repeated freeze/thaw cycles.		Subcellular Location: Secreted ,Cell membrane
Background: The protein encoded by this gene belongs to the gp130 family of cytokine receptors that are known to stimulate gene transcription via activation of cytosolic STAT proteins. This protein is a receptor for leptin (an adipocyte-specific hormone that regulates body weight), and is involved in the regulation of fat metabolism, as well as in a novel hematopoietic pathway that is required for normal lymphopoiesis. Mutations in this gene have been associated with obesity and pituitary dysfunction. Alternatively spliced transcript variants encoding different isoforms have been described for this gene. It is noteworthy that this gene and LEPROT gene (GeneID:54741) share the same promoter and the first 2 exons, however, encode distinct proteins (PMID:9207021).[provided by RefSeq, Nov 2010]		

— VALIDATION IMAGES —

25 ug total protein per lane of various lysates (see on figure) probed with Leptin Receptor polyclonal antibody, unconjugated (bs-0961R) at 1:500 dilution and 4°C overnight incubation. Followed by conjugated secondary antibody incubation at r.t. for 60 min.



Paraformaldehyde-fixed, paraffin embedded Rat Cerebellum; Antigen retrieval by boiling in sodium citrate buffer (pH6.0) for 15 min; Antibody incubation with Leptin Receptor Polyclonal Antibody, Unconjugated (bs-0961R) at 1:200 overnight at 4°C, followed by conjugation to the bs-0295G-HRP and DAB (C-0010) staining.



Paraformaldehyde-fixed, paraffin embedded Human Kidney; Antigen retrieval by boiling in sodium citrate buffer (pH6.0) for 15 min; Antibody incubation with Leptin Receptor Polyclonal Antibody, Unconjugated (bs-0961R) at 1:200 overnight at 4°C, followed by conjugation to the bs-0295G-HRP and DAB (C-0010) staining.

— SELECTED CITATIONS —

- **[IF=5.81]** Shengyan Xi. et al. The Ciji-Hua' ai-Baosheng II Formula Attenuates Chemotherapy-Induced Anorexia in Mice With H22 Hepatocellular Carcinoma. Front Pharmacol. 2021; 12: 715824 IHC ;Mouse. 34489705
- **[IF=3.5]** Tracy A. Nelson. et al. Deletion of the transcription factor EBF1 in perivascular stroma disrupts skeletal homeostasis and precipitates premature aging of the marrow microenvironment. BONE. 2024 Oct;187:117198 FCM ;Mouse. 39002837
- **[IF=3.103]** Zhang W et al. Neuroprotective effects of leptin on cerebral ischemia through JAK2/STAT3/PGC-1-mediated

Important Note: This product as supplied is intended for research use only, not for use in human, therapeutic or diagnostic applications.

mitochondrial function modulation. Brain Res Bull. 2020 Mar;156:118-130. ICC ;Mouse. 31935431

- **[IF=2.645]** Yuri Nambu. et al. Effects of leptin on proliferation of astrocyte- and tanycyte-like neural stem cells in the adult mouse medulla oblongata. Neurosci Res. 2021 May;; IHC ;Mouse. 34058263