

bs-1607R**[Primary Antibody]****CK II alpha Rabbit pAb****BioSS**
ANTIBODIES

www.bioss.com.cn

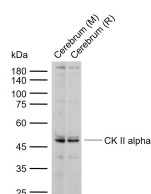
sales@bioss.com.cn

techsupport@bioss.com.cn

400-901-9800

— DATASHEET —

Host: Rabbit	Isotype: IgG	Applications: WB (1:500-2000)
Clonality: Polyclonal		Reactivity: Mouse, Rat (predicted: Human, Cow, Dog)
GeneID: 1457	SWISS: P68400	Predicted MW.: 45 kDa
Target: CK II alpha		Subcellular Location: Nucleus
Immunogen: KLH conjugated synthetic peptide derived from human CK II alpha: 201-300/391.		
Purification: affinity purified by Protein A		
Concentration: 1mg/ml		
Storage: 0.01M TBS (pH7.4) with 1% BSA, 0.02% Proclin300 and 50% Glycerol. Shipped at 4°C. Store at -20°C for one year. Avoid repeated freeze/thaw cycles.		
Background: CKII is a serine/threonine protein kinase that phosphorylates acidic proteins such as casein. The kinase exists as a tetramer and is composed of an alpha, an alpha prime, and two beta subunits. The alpha subunits contain the catalytic activity while the beta subunits undergo autophosphorylation. The gene for this protein is found on chromosome 20, but a related transcribed pseudogene is found on chromosome 11. Three transcript variants have been found, encoding two different isoforms. Protein kinase CKII is recognized as one of the key cellular signals for cell growth and proliferation; it also has an important role in apoptosis.		

— VALIDATION IMAGES —

Sample: Lane 1: Mouse Cerebrum tissue lysates

Lane 2: Rat Cerebrum tissue lysates Primary:

Anti-CK II alpha (bs-1607R) at 1/1000 dilution

Secondary: IRDye800CW Goat Anti-Rabbit IgG at

1/20000 dilution Predicted band size: 45 kDa

Observed band size: 48 kDa