

bs-5449R**[Primary Antibody]****BioSS**
ANTIBODIES

www.bioss.com.cn

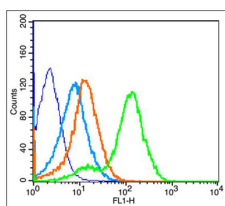
sales@bioss.com.cn

techsupport@bioss.com.cn

400-901-9800

phospho-IGF1R (Tyr1165 + Tyr1166) Rabbit pAb**— DATASHEET —**

Host: Rabbit Clonality: Polyclonal GeneID: 3480 Target: IGF1R (Tyr1165 + Tyr1166) Immunogen: KLH conjugated Synthesised phosphopeptide derived from human IGF1R around the phosphorylation site of Tyr1165+Tyr1166: TD(p-Y)(p-Y)RK. Purification: affinity purified by Protein A Concentration: 1mg/ml Storage: 0.01M TBS (pH7.4) with 1% BSA, 0.02% Proclin300 and 50% Glycerol. Shipped at 4°C. Store at -20°C for one year. Avoid repeated freeze/thaw cycles. Background: This receptor binds insulin-like growth factor 1 (IGF1) with a high affinity and IGF2 with a lower affinity. It has a tyrosine-protein kinase activity, which is necessary for the activation of the IGF1-stimulated downstream signaling cascade. When present in a hybrid receptor with INSR, binds IGF1. PubMed:12138094 shows that hybrid receptors composed of IGF1R and INSR isoform Long are activated with a high affinity by IGF1, with low affinity by IGF2 and not significantly activated by insulin, and that hybrid receptors composed of IGF1R and INSR isoform Short are activated by IGF1, IGF2 and insulin. In contrast, PubMed:16831875 shows that hybrid receptors composed of IGF1R and INSR isoform Long and hybrid receptors composed of IGF1R and INSR isoform Short have similar binding characteristics, both bind IGF1 and have a low affinity for insulin.	Isotype: IgG SWISS: P08069 Applications: Flow-Cyt (1µg/Test) Reactivity: Mouse (predicted: Human, Rat, Pig, Cow, Chicken, Dog) Predicted MW.: 150 kDa Subcellular Location: Cell membrane
--	--

— VALIDATION IMAGES —

Blank control: Mouse Kidney (blue). Primary Antibody: Rabbit Anti-phospho-IGF1R (Tyr1165 + Tyr1166) antibody (bs-5449R, Green); Dilution: 1µg in 100 µL 1X PBS containing 0.5% BSA; Isotype Control Antibody: Rabbit IgG (orange), used under the same conditions; Secondary Antibody: Goat anti-rabbit IgG-FITC (white blue), Dilution: 1:200 in 1 X PBS containing 0.5% BSA. Protocol The cells were fixed with 2% paraformaldehyde for 10 min at 37°C. Primary antibody (bs-5449R, 1µg / 1x10⁶ cells) were incubated for 30 min at room temperature, followed by 1 X PBS containing 0.5% BSA + 1.0% goat serum (15 min) to block non-specific protein-protein interactions. Then the Goat Anti-rabbit IgG/FITC antibody was added into the blocking buffer mentioned above to react with the primary antibody at 1/200 dilution for 40 min on ice. Acquisition of 20,000 events was performed.

Important Note: This product as supplied is intended for research use only, not for use in human, therapeutic or diagnostic applications.