

bs-9352R**[Primary Antibody]****Proteasome 20S alpha 3 Rabbit pAb****Bioss**
ANTIBODIES

www.bioss.com.cn

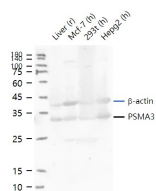
sales@bioss.com.cn

techsupport@bioss.com.cn

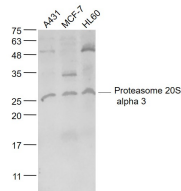
400-901-9800

— DATASHEET —

Host: Rabbit Clonality: Polyclonal GeneID: 5684 Target: Proteasome 20S alpha 3 Immunogen: KLH conjugated synthetic peptide derived from human Proteasome 20S alpha 3: 155-255/255. Purification: affinity purified by Protein A Concentration: 1mg/ml Storage: 0.01M TBS (pH7.4) with 1% BSA, 0.02% Proclin300 and 50% Glycerol. Shipped at 4°C. Store at -20°C for one year. Avoid repeated freeze/thaw cycles. Background: The proteasome is a multicatalytic proteinase complex which is characterized by its ability to cleave peptides with Arg, Phe, Tyr, Leu, and Glu adjacent to the leaving group at neutral or slightly basic pH. The proteasome has an ATP-dependent proteolytic activity. Binds to the C-terminus of CDKN1A and thereby mediates its degradation. Negatively regulates the membrane trafficking of the cell-surface thromboxane A2 receptor (TBXA2R) isoform 2.	Isotype: IgG SWISS: P25788	Applications: WB (1:500-2000) Reactivity: Human, Rat (predicted: Mouse, Rabbit, Pig, Chicken, Dog, Horse) Predicted MW.: 28 kDa Subcellular Location: Cytoplasm ,Nucleus
---	---	--

— VALIDATION IMAGES —

Sample: Lane 1: Rat liver tissue lysates Lane 2: Human MCF-7 cell lysates Lane 3: Human 293T cell lysates Lane 4: Human Hepg2 cell lysates
 Primary: Anti- PSMA3 (Proteasome 20S alpha 3) (bs-9352R) at 1/1000 dilution Secondary: IRDye800CW Goat Anti-Rabbit IgG at 1/20000 dilution Predicted band size: 28 kDa Observed band size: 32 kDa



Sample: A431(Human) Cell Lysate at 30 ug MCF-7(Human) Cell Lysate at 30 ug HL60(Human) Cell Lysate at 30 ug
 Primary: Anti-Proteasome 20S alpha 3 (bs-9352R) at 1/1000 dilution Secondary: IRDye800CW Goat Anti-Rabbit IgG at 1/20000 dilution Predicted band size: 28 kD Observed band size: 28 kD

— SELECTED CITATIONS —

- **[IF=2.823]** Peng - fei Zhang. et al. Integrated analysis of phosphoproteome and ubiquitylome in epididymal sperm of buffalo (Bubalus bubalis). Mol Reprod Dev. 2021 Jan;88(1):15-33 IF ;Bovine. 33140506