

phospho-ITGB3 (Tyr785) Rabbit pAb

Catalog Number: bs-5452R

Target Protein: phospho-ITGB3 (Tyr785)

Concentration: 1mg/ml

Form: Liquid

Host: Rabbit

Clonality: Polyclonal

Isotype: IgG

Applications: WB (1:500-2000)

Reactivity: Human (predicted: Mouse, Rat, Rabbit, Pig, Sheep, Cow, Chicken, Dog, Horse)

Predicted MW: 87 kDa

Entrez Gene: 3690

Swiss Prot: P05106

Source: KLH conjugated Synthesised phosphopeptide derived from human ITGB3 around the phosphorylation site of Tyr785: IT(p-Y)RG.

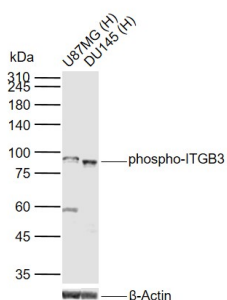
Purification: affinity purified by Protein A

Storage: 0.01M TBS (pH7.4) with 1% BSA, 0.02% Proclin300 and 50% Glycerol.

Shipped at 4°C. Store at -20°C for one year. Avoid repeated freeze/thaw cycles.

Background: The ITGB3 protein product is the integrin beta chain beta 3. Integrins are integral cell-surface proteins composed of an alpha chain and a beta chain. A given chain may combine with multiple partners resulting in different integrins. Integrin beta 3 is found along with the alpha IIb chain in platelets. Integrins are known to participate in cell adhesion as well as cell-surface mediated signalling. [provided by RefSeq, Jul 2008]

VALIDATION IMAGES



Sample: Lane 1: Human U87MG cell lysates Lane 2: Human DU145 cell lysates Primary: Anti-phospho-ITGB3 (Tyr785) (bs-5452R) at 1/200 dilution Secondary: IRDye800CW Goat Anti-Rabbit IgG at 1/20000 dilution
Predicted band size: 87 kDa Observed band size: 87 kDa