

**bs-5450R****[ Primary Antibody ]****phospho-ICAM1 (Tyr512) Rabbit pAb****Bioss**  
ANTIBODIES

www.bioss.com.cn

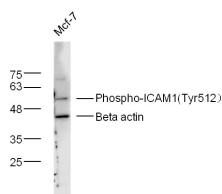
sales@bioss.com.cn

techsupport@bioss.com.cn

400-901-9800

**— DATASHEET —**

<b>Host:</b> Rabbit	<b>Isotype:</b> IgG	<b>Applications:</b> WB (1:500-2000)
<b>Clonality:</b> Polyclonal		
<b>GeneID:</b> 3383	<b>SWISS:</b> P05362	
<b>Target:</b> phospho-ICAM1 (Tyr512)		
<b>Immunogen:</b> KLH conjugated Synthesised phosphopeptide derived from human ICAM1 around the phosphorylation site of Tyr512: KK(p-Y)RL.		
<b>Purification:</b> affinity purified by Protein A		<b>Reactivity:</b> Human
<b>Concentration:</b> 1mg/ml		
<b>Storage:</b> 0.01M TBS (pH7.4) with 1% BSA, 0.02% Proclin300 and 50% Glycerol. Shipped at 4°C. Store at -20°C for one year. Avoid repeated freeze/thaw cycles.		<b>Predicted MW.:</b> 55 kDa
<b>Background:</b> This gene encodes a cell surface glycoprotein which is typically expressed on endothelial cells and cells of the immune system. It binds to integrins of type CD11a / CD18, or CD11b / CD18 and is also exploited by Rhinovirus as a receptor. [provided by RefSeq, Jul 2008].		<b>Subcellular Location:</b> Cell membrane

**— VALIDATION IMAGES —**

Sample: MCF-7 Cell (Human) Lysate at 40 ug  
Primary: Anti-phospho-ICAM1 (Tyr512)  
(bs-5450R) at 1/300 dilution Secondary:  
IRDye800CW Goat Anti-Rabbit IgG at 1/20000  
dilution Predicted band size: 55 kD Observed  
band size: 55 kD