

bs-5445R**[Primary Antibody]****phospho-ILK-1 (Ser259) Rabbit pAb****BioSS**
ANTIBODIES

www.bioss.com.cn

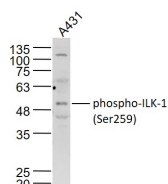
sales@bioss.com.cn

techsupport@bioss.com.cn

400-901-9800

— DATASHEET —

Host: Rabbit	Isotype: IgG	Applications: WB (1:500-2000)
Clonality: Polyclonal		Reactivity: Human (predicted: Rabbit, Pig, Sheep, Cow, Chicken, Dog, Horse)
GeneID: 3611	SWISS: Q13418	Predicted MW.: 50 kDa
Target: ILK-1 (Ser259)		Subcellular Location: Cell membrane ,Cytoplasm
Immunogen: KLH conjugated Synthesised phosphopeptide derived from human ILK-1 around the phosphorylation site of Ser259: CQ(p-S)PP.		
Purification: affinity purified by Protein A		
Concentration: 1mg/ml		
Storage: 0.01M TBS (pH7.4) with 1% BSA, 0.02% Proclin300 and 50% Glycerol. Shipped at 4°C. Store at -20°C for one year. Avoid repeated freeze/thaw cycles.		
Background: The ILK protein is important in different biological pathways such as cell adhesion, anchorage-dependent cell cycle progression, oncogenic transformation, and growth factor signaling. The kinase activity of ILK is low in non-activated cells; its activity is stimulated by cell-ECM interactions and by certain growth factors. 3 Negative regulation of ILK is mediated by two phosphatases: PTEN, a tumor suppressor lipid sphatase, and ILKAP, a PP2C protein phosphatase. In tumor cells that do not express PTEN protein, ILK is constitutively active.		

— VALIDATION IMAGES —

Sample: A431(Human) Cell Lysate at 30 ug
Primary: Anti-phospho-ILK-1 (Ser259) (bs-5445R)
at 1/1000 dilution Secondary: IRDye800CW Goat
Anti-Rabbit IgG at 1/20000 dilution Predicted
band size: 50 kD Observed band size: 50 kD