

bs-5443R**[Primary Antibody]****phospho-ILK-1(Thr173) Rabbit pAb****Bioss**
ANTIBODIES

www.bioss.com.cn

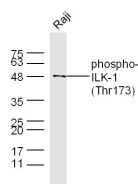
sales@bioss.com.cn

techsupport@bioss.com.cn

400-901-9800

— DATASHEET —

<p>Host: Rabbit</p> <p>Clonality: Polyclonal</p> <p>GeneID: 3611</p> <p>Target: ILK-1(Thr173)</p> <p>Immunogen: KLH conjugated Synthesised phosphopeptide derived from human ILK-1 around the phosphorylation site of Thr173: GT(p-T)RT.</p> <p>Purification: affinity purified by Protein A</p> <p>Concentration: 1mg/ml</p> <p>Storage: 0.01M TBS (pH7.4) with 1% BSA, 0.02% Proclin300 and 50% Glycerol. Shipped at 4°C. Store at -20°C for one year. Avoid repeated freeze/thaw cycles.</p> <p>Background: The ILK protein is important in different biological pathways such as cell adhesion, anchorage-dependent cell cycle progression, oncogenic transformation, and growth factor signaling. The kinase activity of ILK is low in non-activated cells; its activity is stimulated by cell-ECM interactions and by certain growth factors. 3 Negative regulation of ILK is mediated by two phosphatases: PTEN, a tumor suppressor lipid sphatase, and ILKAP, a PP2C protein phosphatase. In tumor cells that do not express PTEN protein, ILK is constitutively active.</p>	<p>Applications: WB (1:500-2000)</p> <p>Reactivity: Human, Rat (predicted: Mouse, Rabbit, Pig, Sheep, Cow, Chicken, Dog, Horse)</p> <p>Predicted MW.: 50 kDa</p> <p>Subcellular Location: Cell membrane ,Cytoplasm</p>
---	--

— VALIDATION IMAGES —

Sample: Raji Cell (Human) Lysate at 40 ug
 Primary: Anti-phospho-ILK-1(Thr173) (bs-5443R)
 at 1/300 dilution Secondary: IRDye800CW Goat
 Anti-Rabbit IgG at 1/20000 dilution Predicted
 band size: 50 kD Observed band size: 50 kD