

bs-3719R**[Primary Antibody]****phospho-Talin (Ser425) Rabbit pAb****BioSS**
ANTIBODIES

www.bioss.com.cn

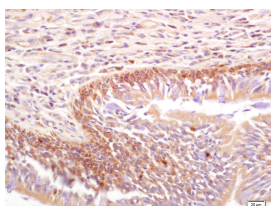
sales@bioss.com.cn

techsupport@bioss.com.cn

400-901-9800

— DATASHEET —

Host: Rabbit Clonality: Polyclonal GeneID: 7094 Target: Talin (Ser425) Immunogen: KLH conjugated Synthesised phosphopeptide derived from human Talin around the phosphorylation site of Ser425: SV(p-S)PK. Purification: affinity purified by Protein A Concentration: 1mg/ml Storage: 0.01M TBS (pH7.4) with 1% BSA, 0.02% Proclin300 and 50% Glycerol. Shipped at 4°C. Store at -20°C for one year. Avoid repeated freeze/thaw cycles. Background: Talin, a multifunctional constituent of cell-substratum attachment sites, is a high molecular weight protein (225-270 kDa) found in variety of tissues and cell types. It is localized at a subset of adherens junctions, specialized cell-cell and cell-matrix associations that are characterized by the presence of filamentous actin at the cytoplasmic face of the junctional complex. In cultured cells, talin is absent from cell-cell junctions and found predominantly at adhesion plaques and in fibrillar streaks underlying cell surface fibronectin. Talin interacts with at least two other proteins that are localized at adhesion plaques, vinculin and integrin. Talin and vinculin have been shown to interact with each other and both have been proposed to be involved in generating the transmembrane connection, between the extracellular matrix and the cytoskeleton, that occurs at adhesion plaques. At physiological ionic strength, talin is an elongate, flexible, monomeric protein with the ability to self-associate into dimers at higher protein concentrations.	Isotype: IgG SWISS: Q9Y490 Applications: IHC-P (1:100-500) IHC-F (1:100-500) IF (1:100-500) Reactivity: Human (predicted: Mouse, Rat, Rabbit, Pig, Cow, Chicken, Dog, Horse) Predicted MW.: 280 kDa Subcellular Location: Cell membrane ,Cytoplasm
--	---

— VALIDATION IMAGES —

Tissue/cell: human lung carcinoma; 4% Paraformaldehyde-fixed and paraffin-embedded; Antigen retrieval: citrate buffer (0.01M, pH 6.0), Boiling bathing for 15min; Block endogenous peroxidase by 3% Hydrogen peroxide for 30min; Blocking buffer (normal goat serum, C-0005) at 37°C for 20 min; Incubation: Anti-Phospho-Talin(Ser425) Polyclonal Antibody, Unconjugated(bs-3719R) 1:200, overnight at 4°C, followed by conjugation to the secondary antibody(SP-0023) and DAB(C-0010) staining

— SELECTED CITATIONS —

- **[IF=1.7]** Zhengxiu He. et al. Talin1 Ser425 phosphorylation promotes colorectal cancer progression and metastasis.

Important Note: This product as supplied is intended for research use only, not for use in human, therapeutic or diagnostic applications.

