

bs-3644R**[Primary Antibody]****KLF9 Rabbit pAb****Bioss**
ANTIBODIES

www.bioss.com.cn

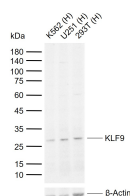
sales@bioss.com.cn

techsupport@bioss.com.cn

400-901-9800

— DATASHEET —

Host: Rabbit	Isotype: IgG	Applications: WB (1:500-2000)
Clonality: Polyclonal		Reactivity: Human (predicted: Mouse, Rat)
GeneID: 687	SWISS: Q13886	
Target: KLF9		Predicted MW.: 27 kDa
Immunogen: KLH conjugated synthetic peptide derived from human KLF9: 151-244/244.		Subcellular Location: Nucleus
Purification: affinity purified by Protein A		
Concentration: 1mg/ml		
Storage: 0.01M TBS (pH7.4) with 1% BSA, 0.02% Proclin300 and 50% Glycerol. Shipped at 4°C. Store at -20°C for one year. Avoid repeated freeze/thaw cycles.		
Background: KLF9 is a transcription factor that binds to GC box promoter elements. It activates mRNA synthesis selectively from genes containing tandem repeats of GC boxes but represses genes with a single GC box. KLF9 belongs to the Sp1 C2H2 type zinc finger protein family.		

— VALIDATION IMAGES —

Sample: Lane 1: Human K562 cell lysates Lane 2: Human U251 cell lysates Lane 3: Human 293T cell lysates Primary: Anti-KLF9 (bs-3644R) at 1/1000 dilution Secondary: IRDye800CW Goat Anti-Rabbit IgG at 1/20000 dilution Predicted band size: 27 kDa Observed band size: 27 kDa

— SELECTED CITATIONS —

- **[IF=6.5]** Yang Fan. et al. Identifying oxidative stress-related biomarkers in idiopathic pulmonary fibrosis in the context of predictive, preventive, and personalized medicine using integrative omics approaches and machine-learning strategies. EPMA Journal. 2023 Jul;:1-26 WB ;Rat. 10.1007/s13167-023-00334-4
- **[IF=5.2]** Xiaonan Zhou. et al.KLF9-GRK5-HDAC6 axis aggravates osteoarthritis pathogenesis by promoting chondrocyte extracellular matrix degradation and apoptosis.COMMUNICATIONS BIOLOGY.2025 Jan 8;8(1):23. Western blot , IHC ; 39779910
- **[IF=2.145]** Yong Luo. et al. Identification of a Necroptosis-Related Prognostic Index and Associated Regulatory Axis in Kidney Renal Clear Cell Carcinoma. INT J GEN MED. 2022; 15: 5407–5423 IHC ;Human. 35685693