

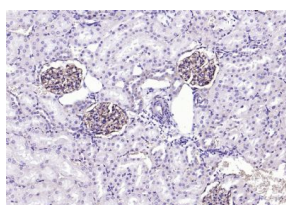
bs-2203R**[Primary Antibody]****Bioss**
ANTIBODIES

www.bioss.com.cn

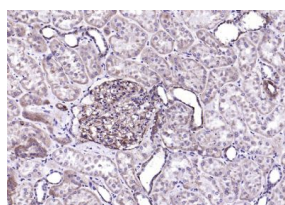
sales@bioss.com.cn

techsupport@bioss.com.cn

400-901-9800

ITGAV Rabbit pAb**DATASHEET****Host:** Rabbit**Isotype:** IgG**Clonality:** Polyclonal**Target:** ITGAV**Purification:** affinity purified by Protein A**Concentration:** 1mg/ml**Storage:** 0.01M TBS (pH7.4) with 1% BSA, 0.02% Proclin300 and 50% Glycerol.
Shipped at 4°C. Store at -20°C for one year. Avoid repeated freeze/thaw cycles.**Background:** Integrins are heterodimeric proteins made up of alpha and beta subunits. At least 18 alpha and 8 beta subunits have been described in mammals. Integrin family members are membrane receptors involved in cell adhesion and recognition in a variety of processes including embryogenesis, hemostasis, tissue repair, immune response and metastatic diffusion of tumour cells. ITGAV encodes integrin alpha chain V. Integrins are heterodimeric integral membrane proteins composed of an alpha chain and a beta chain. The I-domain containing integrin alpha V undergoes post-translational cleavage to yield disulfide-linked heavy and light chains, that combine with multiple integrin beta chains to form different integrins. Among the known associating beta chains (beta chains 1,3,5,6, and 8; ITGB1, ITGB3, ITGB5, ITGB6, and ITGB8), each can interact with extracellular matrix ligands; the alpha V beta 3 integrin, perhaps the most studied of these, is referred to as the Vitronectin receptor (VNR). In addition to adhesion, many integrins are known to facilitate signal transduction.**Applications:** IHC-P (1:500-2000)**IHC-F** (1:500-2000)**IF** (1:100-500)**ELISA** (1:5000-10000)**Reactivity:** Human, Rat
(predicted: Mouse)**Predicted
MW.:** 18/113 kDa**Subcellular
Location:** Cell membrane**VALIDATION IMAGES**

Paraformaldehyde-fixed, paraffin embedded (rat kidney); Antigen retrieval by boiling in sodium citrate buffer (pH6.0) for 15min; Block endogenous peroxidase by 3% hydrogen peroxide for 20 minutes; Blocking buffer (normal goat serum) at 37°C for 30min; Antibody incubation with (ITGAV) Polyclonal Antibody, Unconjugated (bs-2203R) at 1:500 overnight at 4°C, followed by operating according to SP Kit(Rabbit) (sp-0023) instructions and DAB staining.



Paraformaldehyde-fixed, paraffin embedded (human kidney); Antigen retrieval by boiling in sodium citrate buffer (pH6.0) for 15min; Block endogenous peroxidase by 3% hydrogen peroxide for 20 minutes; Blocking buffer (normal goat serum) at 37°C for 30min; Antibody incubation with (ITGAV) Polyclonal Antibody, Unconjugated (bs-2203R) at 1:500 overnight at 4°C, followed by operating according to SP Kit(Rabbit) (sp-0023) instructions and DAB staining.

SELECTED CITATIONS

- **[IF=5.5]** Yu Xiang. et al. Construction of a prognostic prediction model in liver cancer based on genes involved in integrin cell surface interactions pathway by multi-omics screening. FRONT CELL DEV BIOL. 2024 Feb;12: WB ;Human. 38374893
- **[IF=1.664]** Virga J et al. Extracellular matrix differences in glioblastoma patients with different

Important Note: This product as supplied is intended for research use only, not for use in human, therapeutic or diagnostic applications.

prognoses.(2019)ONCOLOGY LETTERS.17: 797-806. IHC ;Human. 10.3892/ol.2018.9649