

bs-5471R**[Primary Antibody]****phospho-MDM2 (Ser186) Rabbit pAb****BioSS**
ANTIBODIES

www.bioss.com.cn

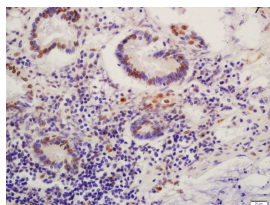
sales@bioss.com.cn

techsupport@bioss.com.cn

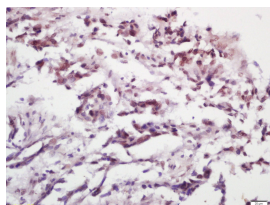
400-901-9800

— DATASHEET —

Host: Rabbit	Isotype: IgG	Applications: IHC-P (1:100-500)
Clonality: Polyclonal		IHC-F (1:100-500)
GeneID: 4193	SWISS: Q00987	IF (1:100-500)
Target: MDM2 (Ser186)		Reactivity: Human (predicted: Rabbit, Pig, Cow, Chicken, Dog, GuineaPig, Horse)
Immunogen: KLH conjugated Synthesised phosphopeptide derived from human MDM2 around the phosphorylation site of Ser186: HK(p-S)D-NH ₂ .		Predicted MW.: 55 kDa
Purification: affinity purified by Protein A		Subcellular Location: Cytoplasm ,Nucleus
Concentration: 1mg/ml		
Storage: 0.01M TBS (pH7.4) with 1% BSA, 0.02% Proclin300 and 50% Glycerol. Shipped at 4°C. Store at -20°C for one year. Avoid repeated freeze/thaw cycles.		
Background: Inhibits TP53/p53- and TP73/p73-mediated cell cycle arrest and apoptosis by binding its transcriptional activation domain. Functions as a ubiquitin ligase E3, in the presence of E1 and E2, toward p53 and itself. Permits the nuclear export of p53 and targets it for proteasome-mediated proteolysis. Binds p53, p73, ARF(P14), ribosomal protein L5 and specifically to RNA. Can interact also with retinoblastoma protein(RB), E1A-associated protein EP300 and the E2F1 transcription factor. Forms a ternary complex with TP53/p53 and WWOX. Interacts with CDKN2AIP, MTBP, TRBG1 and USP7. Isoform Mdm2-F does not interact with TP53/p53. Interacts with PYHIN1. Interacts with, and ubiquitinates HIV-1 Tat. Belongs to the MDM2/MDM4 family.		

— VALIDATION IMAGES —

Tissue/cell: human colon carcinoma; 4% Paraformaldehyde-fixed and paraffin-embedded; Antigen retrieval: citrate buffer (0.01M, pH 6.0), Boiling bathing for 15min; Block endogenous peroxidase by 3% Hydrogen peroxide for 30min; Blocking buffer (normal goat serum, C-0005) at 37°C for 20 min; Incubation: Anti-Phospho-MDM2(Ser186) Polyclonal Antibody, Unconjugated(bs-5471R) 1:200, overnight at 4°C, followed by conjugation to the secondary antibody(SP-0023) and DAB(C-0010) staining



Tissue/cell: human gastric carcinoma; 4% Paraformaldehyde-fixed and paraffin-embedded; Antigen retrieval: citrate buffer (0.01M, pH 6.0), Boiling bathing for 15min; Block endogenous peroxidase by 3% Hydrogen peroxide for 30min; Blocking buffer (normal goat serum, C-0005) at 37°C for 20 min; Incubation: Anti-Phospho-MDM2(Ser186) Polyclonal Antibody, Unconjugated(bs-5471R) 1:200, overnight at 4°C, followed by conjugation to the secondary antibody(SP-0023) and DAB(C-0010) staining

— SELECTED CITATIONS —

- **[IF=5.6]** Chi Zhang, et al. Proximal Tubular Lats2 Ablation Exacerbates Ischemia/Reperfusion Injury (IRI)-Induced Renal Maladaptive Repair through the Upregulation of P53. INT J MOL SCI. 2023 Jan;24(20):15258 WB,IHC ;Mouse. 37894939
- **[IF=2.985]** Zhongying Wang et al. MDM2 phosphorylation mediates H₂O₂-induced lens epithelial cells apoptosis and age-related cataract. Biochem Biophys Res Commun. 2020 Jul 12;528(1):112-119. WB,IHC ;Human/Mouse. 32471716

Important Note: This product as supplied is intended for research use only, not for use in human, therapeutic or diagnostic applications.