

---

## phospho-IL7R (Tyr449) Rabbit pAb

Catalog Number: bs-5395R

Target Protein: phospho-IL7R (Tyr449)

Concentration: 1mg/ml

Form: Liquid

Host: Rabbit

Clonality: Polyclonal

Isotype: IgG

Applications: WB (1:500-2000), Flow-Cyt (2ug/Test)

Reactivity: Human (predicted:Mouse, Rat, Pig, Cow, Chicken, Dog, Horse)

Predicted MW: 48 kDa

Entrez Gene: 3575

Swiss Prot: P16871

Source: KLH conjugated Synthesised phosphopeptide derived from human IL-7Ra around the phosphorylation site of Tyr449: EA(p-Y)VT.

Purification: affinity purified by Protein A

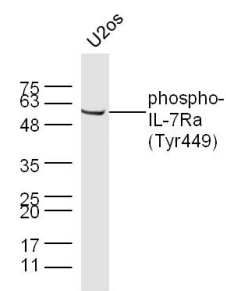
Storage: 0.01M TBS (pH7.4) with 1% BSA, 0.02% Proclin300 and 50% Glycerol.

Shipped at 4°C. Store at -20°C for one year. Avoid repeated freeze/thaw cycles.

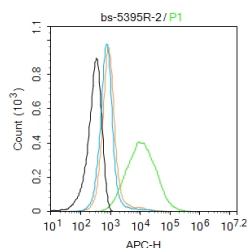
**Background:** The protein encoded by this gene is a receptor for interleukine 7 (IL7). The function of this receptor requires the interleukin 2 receptor, gamma chain (IL2RG), which is a common gamma chain shared by the receptors of various cytokines, including interleukine 2, 4, 7, 9, and 15. This protein has been shown to play a critical role in the V(D)J recombination during lymphocyte development. This protein is also found to control the accessibility of the TCR gamma locus by STAT5 and histone acetylation. Knockout studies in mice suggested that blocking apoptosis is an essential function of this protein during differentiation and activation of T lymphocytes. The functional defects in this protein may be associated with the pathogenesis of the severe combined immunodeficiency (SCID).

### VALIDATION IMAGES

---



Sample: U20s Cell (Human) Lysate at 40 ug Primary: Anti-phospho-IL-7Ra (Tyr449) (bs-5395R) at 1/300 dilution Secondary: IRDye800CW Goat Anti-Rabbit IgG at 1/20000 dilution Predicted band size: 48 kD  
Observed band size: 55 kD



Blank control: HeLa. Primary Antibody (green line): Rabbit Anti-CD127 antibody (bs-5395R) Dilution: 2µg /10<sup>6</sup> cells; Isotype Control Antibody (orange line): Rabbit IgG . Secondary Antibody : Goat anti-rabbit IgG-AF647 Dilution: 1µg /test. Protocol The cells were incubated in 5%BSA to block non-specific protein-protein interactions for 30 min at room temperature .Cells stained with Primary Antibody for 30 min at room temperature. The secondary antibody used for 40 min at room temperature. Acquisition of 20,000 events was performed.

## PRODUCT SPECIFIC PUBLICATIONS

**[IF=3.725]** Moyuru Hayashi. et al. Water intake accelerates ATP release from myofibroblast cells in rats: ATP-mediated podoplanin-dependent control for physiological function and immunity. Am J Physiol-Gastr L. 2021 Jan;320(1):G54-G65 **Other** ; . 33146549