

bs-1168R**[Primary Antibody]****CCR4 Rabbit pAb****BioSS**
ANTIBODIES

www.bioss.com.cn

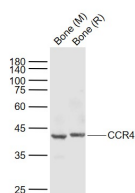
sales@bioss.com.cn

techsupport@bioss.com.cn

400-901-9800

— DATASHEET —

Host: Rabbit	Isotype: IgG	Applications: WB (1:500-2000)
Clonality: Polyclonal		Reactivity: Mouse, Rat
GeneID: 1233	SWISS: P51679	
Target: CCR4		
Immunogen: KLH conjugated synthetic peptide derived from human CCR-4: 201-300/360. < Cytoplasmic >		Predicted MW.: 40 kDa
Purification: affinity purified by Protein A		Subcellular Location: Cell membrane
Concentration: 1mg/ml		
Storage: 0.01M TBS (pH7.4) with 1% BSA, 0.02% Proclin300 and 50% Glycerol. Shipped at 4°C. Store at -20°C for one year. Avoid repeated freeze/thaw cycles.		
Background: The protein encoded by this gene belongs to the G-protein-coupled receptor family . It is a receptor for the CC chemokine - MIP-1, RANTES, TARC and MCP-1. Chemokines are a group of small polypeptide, structurally related molecules that regulate cell trafficking of various types of leukocytes. The chemokines also play fundamental roles in the development, homeostasis, and function of the immune system, and they have effects on cells of the central nervous system as well as on endothelial cells involved in angiogenesis or angiostasis. [provided by RefSeq, Jul 2008]		

— VALIDATION IMAGES —

Sample: Lane 1: Bone (Mouse) Lysate at 40 ug
 Lane 2: Bone (Rat) Lysate at 40 ug Primary: Anti-CCR4 (bs-20788R) at 1/1000 dilution Secondary: IRDye800CW Goat Anti-Rabbit IgG at 1/20000 dilution Predicted band size: 42 kD Observed band size: 42 kD

— SELECTED CITATIONS —

- **[IF=7.8]** Lin Liu. et al. Potential Applications of Dual Haptoglobin Expression in the Reclassification and Treatment of Hepatocellular Carcinoma. TRANSL RES. 2024 May;; WB ;Human. 38815898
- **[IF=5.793]** Nicolas Pelisch. et al. CCL3 contributes to secondary damage after spinal cord injury. J Neuroinflamm. 2020 Dec;17(1):1-16 Other ;. 33246483
- **[IF=4.2]** Ge, L. P., et al. "Integration of nondegradable polystyrene and degradable gelatin in a core-sheath nanofibrous patch for pelvic reconstruction." International Journal of Nanomedicine 2015;10 3193-3201 IHC ;="Rat". 25995629
- **[IF=4.223]** Han, Dongxu. et al. Subacute cadmium exposure modulates Th1 polarization to trigger ER stress-induced porcine hepatocyte apoptosis via regulation of miR-369-TNFα axis. 2021 Oct 14 IF ;Pig. 34648162