

**bs-0562R****[ Primary Antibody ]**

**BioSS**  
ANTIBODIES

www.bioss.com.cn

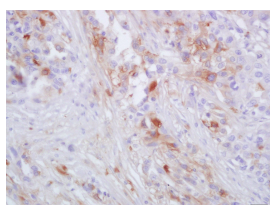
sales@bioss.com.cn

techsupport@bioss.com.cn

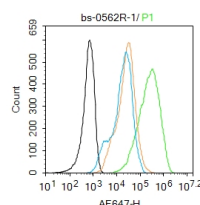
400-901-9800

**CCR-2 Rabbit pAb****DATASHEET**

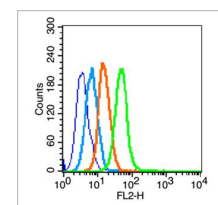
<b>Host:</b> Rabbit	<b>Isotype:</b> IgG	<b>Applications:</b> IHC-P (1:100-500)
<b>Clonality:</b> Polyclonal		<b>IHC-F</b> (1:100-500)
<b>GeneID:</b> 729230	<b>SWISS:</b> P41597	<b>IF</b> (1:100-500)
<b>Target:</b> CCR-2		<b>Flow-Cyt</b> (0.2µg/Test)
<b>Immunogen:</b> KLH conjugated synthetic peptide derived from human CCR-2: 201-300/373. < Cytoplasmic >		<b>Reactivity:</b> Human (predicted: Mouse, Rat, Dog, Horse)
<b>Purification:</b> affinity purified by Protein A		
<b>Concentration:</b> 1mg/ml		<b>Predicted MW.:</b> 41 kDa
<b>Storage:</b> 0.01M TBS (pH7.4) with 1% BSA, 0.02% Proclin300 and 50% Glycerol. Shipped at 4°C. Store at -20°C for one year. Avoid repeated freeze/thaw cycles.		<b>Subcellular Location:</b> Cell membrane
<b>Background:</b> This gene encodes two isoforms of a receptor for monocyte chemoattractant protein-1, a chemokine which specifically mediates monocyte chemotaxis. Monocyte chemoattractant protein-1 is involved in monocyte infiltration in inflammatory diseases such as rheumatoid arthritis as well as in the inflammatory response against tumors. The receptors encoded by this gene mediate agonist-dependent calcium mobilization and inhibition of adenylyl cyclase. This gene is located in the chemokine receptor gene cluster region. Two alternatively spliced transcript variants are expressed by the gene. [provided by RefSeq, Mar 2009].		

**VALIDATION IMAGES**

Tissue/cell: human lung carcinoma; 4% Paraformaldehyde-fixed and paraffin-embedded; Antigen retrieval: citrate buffer (0.01M, pH 6.0), Boiling bathing for 15min; Block endogenous peroxidase by 3% Hydrogen peroxide for 30min; Blocking buffer (normal goat serum, C-0005) at 37°C for 20 min; Incubation: Anti-CCR2 Polyclonal Antibody, Unconjugated(bs-0562R) 1:200, overnight at 4°C, followed by conjugation to the secondary antibody(SP-0023) and DAB(C-0010) staining



Blank control: Raw264.7. Primary Antibody (green line): Rabbit Anti-CCR-2 antibody (bs-0562R) Dilution: 1µg/10<sup>6</sup> cells; Isotype Control Antibody (orange line): Rabbit IgG. Secondary Antibody: Goat anti-rabbit IgG-AF647 Dilution: 1µg/test. Protocol The cells were incubated in 5%BSA to block non-specific protein-protein interactions for 30 min at room temperature. Cells stained with Primary Antibody for 30 min at room temperature. The secondary antibody used for 40 min at room temperature. Acquisition of 20,000 events was performed.



Blank control (blue line): Hela (blue). Primary Antibody (green line): Rabbit Anti-CCR-2 antibody (bs-0562R) Dilution: 0.2µg/10<sup>6</sup> cells; Isotype Control Antibody (orange line): Rabbit IgG. Secondary Antibody (white blue line): Goat anti-rabbit IgG-PE Dilution: 1µg/test. Protocol The cells were fixed with 80% methanol for 5 min at -20°C (The cells were fixed with 2% paraformaldehyde for 10 min at room temperature). Cells stained with Primary Antibody for 30 min at room temperature. The cells were then incubated in 1 X PBS/2%BSA/10% goat serum to block non-specific protein-protein interactions followed by the antibody for 15 min at room temperature. The secondary antibody used for 40 min at room temperature. Acquisition of 20,000 events was performed.

**SELECTED CITATIONS**

- **[IF=9.91]** Li, Ting, et al. "Proliferation of parenchymal microglia is the main source of microgliosis after ischaemic

Important Note: This product as supplied is intended for research use only, not for use in human, therapeutic or diagnostic applications.

stroke." Brain (2013): awt287. Other ;="Mouse". 24154617

- **[IF=5.17]** Yang et al. CCL2-CCR2 axis promotes metastasis of nasopharyngeal carcinoma by activating ERK1/2-MMP2/9 pathway. (2016) Oncotarget. 7:15632-47 IHC ;Human. 26701209
- **[IF=4.658]** Liu T et al. High - fat diet - induced dysbiosis mediates MCP - 1/CCR2 axis - dependent M2 macrophage polarization and promotes intestinal adenoma - adenocarcinoma sequence. J Cell Mol Med. 2020 Feb;24(4):2648-2662. IHC,WB ;Mouse. 31957197
- **[IF=4.137]** Huang T et al. Schwann Cell-Derived CCL2 Promotes the Perineural Invasion of Cervical Cancer. Front Oncol. 2020 Jan 29;10:19. IHC ;Human. 32064233
- **[IF=3.37]** Lin-Peng Zhu. et al. Chemokine CCL7 mediates trigeminal neuropathic pain via CCR2/CCR3-ERK pathway in the trigeminal ganglion of mice. MOL PAIN. ;(): IF ;Mouse. 36998150