

bs-3458R**[Primary Antibody]**

phospho-Cardiac Troponin I (Ser23 + Ser24) Rabbit pAb

BioSS
ANTIBODIES

www.bioss.com.cn

sales@bioss.com.cn

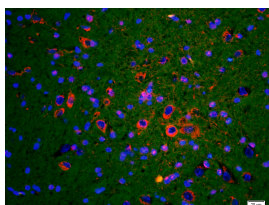
techsupport@bioss.com.cn

400-901-9800

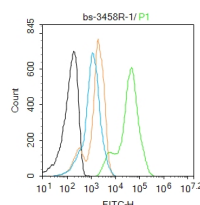
— DATASHEET —

Host: Rabbit	Isotype: IgG	Applications: IHC-P (1:100-500)
Clonality: Polyclonal		IHC-F (1:100-500)
GeneID: 7137	SWISS: P19429	IF (1:100-500)
Target: Cardiac Troponin I (Ser23 + Ser24)		Flow-Cyt (1ug/Test)
Immunogen: KLH conjugated Synthesised phosphopeptide derived from human Troponin I around the phosphorylation site of Ser23/24: RR(p-S)(p-S)NY.		Reactivity: Human, Rat
Purification: affinity purified by Protein A		
Concentration: 1mg/ml		Predicted MW.: 34 kDa
Storage: 0.01M TBS (pH7.4) with 1% BSA, 0.02% Proclin300 and 50% Glycerol. Shipped at 4°C. Store at -20°C for one year. Avoid repeated freeze/thaw cycles.		Subcellular Location: Cytoplasm
Background: Troponin I (TnI), along with troponin T (TnT) and troponin C (TnC), is one of 3 subunits that form the troponin complex of the thin filaments of striated muscle. TnI is the inhibitory subunit; blocking actin-myosin interactions and thereby mediating striated muscle relaxation. The TnI subfamily contains three genes: TnI-skeletal-fast-twitch, TnI-skeletal-slow-twitch, and TnI-cardiac. This gene encodes the TnI-cardiac protein and is exclusively expressed in cardiac muscle tissues. Mutations in this gene cause familial hypertrophic cardiomyopathy type 7 (CMH7) and familial restrictive cardiomyopathy (RCM). [provided by RefSeq, Jul 2008]		

— VALIDATION IMAGES —



Tissue/cell: rat brain tissue;4% Paraformaldehyde-fixed and paraffin-embedded; Antigen retrieval: citrate buffer (0.01M, pH 6.0), Boiling bathing for 15min; Blocking buffer (normal goat serum,C-0005) at 37°C for 20 min; Incubation: Anti-Phospho-Troponin I(Ser23/24) Polyclonal Antibody, Unconjugated(bs-3458R) 1:200, overnight at 4°C; The secondary antibody was Goat Anti-Rabbit IgG, Cy3 conjugated (bs-0295G-Cy3)used at 1:200 dilution for 40 minutes at 37°C. DAPI(5ug/ml,blue,C-0033) was used to stain the cell nuclei



Blank control: K562. Primary Antibody (green line): Rabbit Anti-Phospho-Cardiac Troponin I (Ser23 + Ser24) antibody (bs-3458R) Dilution: 1μg /10⁶ cells; Isotype Control Antibody (orange line): Rabbit IgG . Secondary Antibody : Goat anti-rabbit IgG-FITC Dilution: 1μg /test. Protocol The cells were fixed with 4% PFA (10min at room temperature)and then permeabilized with 0.1% PBST for 20 min at room temperature. The cells were then incubated in 5%BSA to block non-specific protein-protein interactions for 30 min at room temperature .Cells stained with Primary Antibody for 30 min at room temperature. The secondary antibody used for 40 min at room temperature. Acquisition of 20,000 events was performed.