

bs-7659R**[Primary Antibody]****DATF1 Rabbit pAb****BioSS**
ANTIBODIES

www.bioss.com.cn

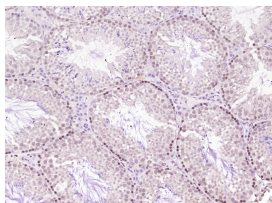
sales@bioss.com.cn

techsupport@bioss.com.cn

400-901-9800

— DATASHEET —

Host: Rabbit	Isotype: IgG	Applications: IHC-P (1:100-500) IHC-F (1:100-500) IF (1:100-500) Reactivity: Mouse (predicted: Human, Rat, Sheep, Cow, Chicken, Dog, Horse) Predicted MW.: 244 kDa Subcellular Location: Cytoplasm ,Nucleus
Clonality: Polyclonal		
GeneID: 11083	SWISS: Q9BTC0	
Target: DATF1		
Immunogen: KLH conjugated synthetic peptide derived from human DATF1: 1-100/2240.		
Purification: affinity purified by Protein A		
Concentration: 1mg/ml		
Storage: 0.01M TBS (pH7.4) with 1% BSA, 0.02% Proclin300 and 50% Glycerol. Shipped at 4°C. Store at -20°C for one year. Avoid repeated freeze/thaw cycles.		
Background: Apoptosis plays an important role in many cellular processes. In mice, the death inducer obliterator 1 (Dio1) gene, a putative transcription factor, is upregulated by apoptotic signals and encodes a cytoplasmic protein that translocates to the nucleus upon apoptotic signal activation. Dio1 expression is upregulated when an apoptosis is detected. When overexpressed, the mouse protein induced apoptosis in cell lines growing in vitro. Human DATF1 (death associated transcription factor 1) is similar to the mouse gene and therefore is thought to be involved in apoptosis.		

— VALIDATION IMAGES —

Paraformaldehyde-fixed, paraffin embedded (Mouse testis); Antigen retrieval by boiling in sodium citrate buffer (pH6.0) for 15min; Block endogenous peroxidase by 3% hydrogen peroxide for 20 minutes; Blocking buffer (normal goat serum) at 37°C for 30min; Antibody incubation with (DATF1) Polyclonal Antibody, Unconjugated (bs-7659R) at 1:400 overnight at 4°C, followed by operating according to SP Kit(Rabbit) (sp-0023) instructions and DAB staining.