

bs-0992R

[Primary Antibody]

HPV16 E7 Rabbit pAb

BioSS
ANTIBODIES

www.bioss.com.cn

sales@bioss.com.cn

techsupport@bioss.com.cn

400-901-9800

— DATASHEET —

Host: Rabbit

Isotype: IgG

Clonality: Polyclonal

Target: HPV16 E7

Immunogen: KLH conjugated synthetic peptide derived from the middle of HPV16-E7: 21-98/98.

Purification: affinity purified by Protein A

Concentration: 1mg/ml

Storage: 0.01M TBS (pH7.4) with 1% BSA, 0.02% Proclin300 and 50% Glycerol.
Shipped at 4°C. Store at -20°C for one year. Avoid repeated freeze/thaw cycles.

Applications: IHC-P (1:100-500)

IHC-F (1:100-500)

IF (1:100-500)

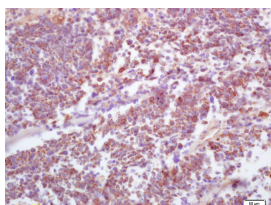
Flow-Cyt (1 μ g/Test)

Reactivity: Human

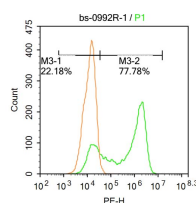
(predicted: HPV16)

Predicted MW.: 11 kDa

— VALIDATION IMAGES —



Tissue/cell: human lung carcinoma; 4% Paraformaldehyde-fixed and paraffin-embedded; Antigen retrieval: citrate buffer (0.01M, pH 6.0), Boiling bathing for 15min; Block endogenous peroxidase by 3% Hydrogen peroxide for 30min; Blocking buffer (normal goat serum, C-0005) at 37°C for 20 min; Incubation: Anti-HPV16-E7 Polyclonal Antibody, Unconjugated(bs-0992R) 1:200, overnight at 4°C, followed by conjugation to the secondary antibody(SP-0023) and DAB(C-0010) staining



Blank control: Hela. Primary Antibody (green line): Rabbit Anti-HPV16 E7 antibody (bs-0992R) Dilution: 1 μ g/10⁶ cells; Isotype Control Antibody (orange line): Rabbit IgG. Secondary Antibody : Goat anti-rabbit IgG-PE Dilution: 1 μ g/test. Protocol The cells were fixed with 4% PFA (10min at room temperature) and then permeabilized with 90% ice-cold methanol for 20 min at -20°C. The cells were then incubated in 5%BSA to block non-specific protein-protein interactions for 30 min at room temperature .Cells stained with Primary Antibody for 30 min at room temperature. The secondary antibody used for 40 min at room temperature. Acquisition of 20,000 events was performed.