

bs-3431R**[Primary Antibody]**

www.bioss.com.cn

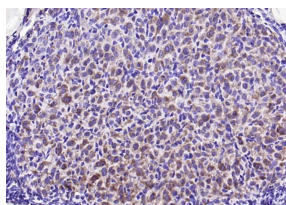
sales@bioss.com.cn

techsupport@bioss.com.cn

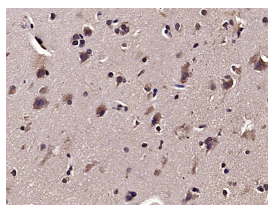
400-901-9800

Phospho-STMN1 (Ser16) Rabbit pAb**— DATASHEET —**

Host: Rabbit	Isotype: IgG	Applications: IHC-P (1:100-500)
Clonality: Polyclonal		IHC-F (1:100-500)
GeneID: 3925	SWISS: P16949	IF (1:100-500)
Target: Phospho-STMN1 (Ser16)		Reactivity: Human, Mouse (predicted: Rat, Rabbit, Chicken)
Immunogen: KLH conjugated synthesised phosphopeptide derived from human Stathmin 1 around the phosphorylation site of Ser16: RA(p-S)GQ.		Predicted MW.: 16 kDa
Purification: affinity purified by Protein A		Subcellular Location: Cytoplasm
Concentration: 1mg/ml		
Storage: 0.01M TBS (pH7.4) with 1% BSA, 0.02% Proclin300 and 50% Glycerol. Shipped at 4°C. Store at -20°C for one year. Avoid repeated freeze/thaw cycles.		
Background: This gene belongs to the stathmin family of genes. It encodes a ubiquitous cytosolic phosphoprotein proposed to function as an intracellular relay integrating regulatory signals of the cellular environment. The encoded protein is involved in the regulation of the microtubule filament system by destabilizing microtubules. It prevents assembly and promotes disassembly of microtubules. Multiple transcript variants encoding different isoforms have been found for this gene. [provided by RefSeq, Feb 2009]		

— VALIDATION IMAGES —

Paraformaldehyde-fixed, paraffin embedded (mouse ovary); Antigen retrieval by boiling in sodium citrate buffer (pH6.0) for 15min; Block endogenous peroxidase by 3% hydrogen peroxide for 20 minutes; Blocking buffer (normal goat serum) at 37°C for 30min; Antibody incubation with (Phospho-STMN1 (Ser16)) Polyclonal Antibody, Unconjugated (bs-3431R) at 1:200 overnight at 4°C, followed by operating according to SP Kit(Rabbit) (sp-0023) instructions and DAB staining.



Paraformaldehyde-fixed, paraffin embedded (human brain glioma); Antigen retrieval by microwave in sodium citrate buffer (pH6.0); Block endogenous peroxidase by 3% hydrogen peroxide for 30 minutes; Blocking buffer (3%BSA) at RT for 30min; Antibody incubation with (Stathmin 1 (Ser16)) Polyclonal/Monoclonal Antibody, Unconjugated (bs-3431R) at 1:400 overnight at 4°C, followed by conjugation to the secondary antibody (labeled with HRP) and DAB staining.

— SELECTED CITATIONS —

- **[IF=1.39]** Ma et al. Siva 1 inhibits proliferation, migration and invasion by phosphorylating Stathmin in ovarian cancer cells. (2017) Oncol.Let. 14:1512-1518 WB ;Homo sapiens (Human). 28789373