

**bs-11566R****[ Primary Antibody ]****GLIS2 Rabbit pAb****Bioss**  
**ANTIBODIES**

www.bioss.com.cn

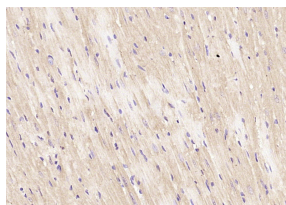
sales@bioss.com.cn

techsupport@bioss.com.cn

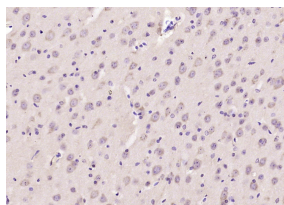
400-901-9800

**— DATASHEET —**

<b>Host:</b> Rabbit	<b>Isotype:</b> IgG	<b>Applications:</b> IHC-P (1:100-500)
<b>Clonality:</b> Polyclonal		<b>IHC-F</b> (1:100-500)
<b>GeneID:</b> 84662	<b>SWISS:</b> Q9BZE0	<b>IF</b> (1:100-500)
<b>Target:</b> GLIS2		<b>Reactivity:</b> Mouse, Rat (predicted: Human, Rabbit, Pig, Sheep, Cow, Chicken, Dog)
<b>Immunogen:</b> KLH conjugated synthetic peptide derived from human GLIS2: 271-350/524.		<b>Predicted MW.:</b> 56 kDa
<b>Purification:</b> affinity purified by Protein A		<b>Subcellular Location:</b> Cytoplasm ,Nucleus
<b>Concentration:</b> 1mg/ml		
<b>Storage:</b> 0.01M TBS (pH7.4) with 1% BSA, 0.02% Proclin300 and 50% Glycerol. Shipped at 4°C. Store at -20°C for one year. Avoid repeated freeze/thaw cycles.		
<b>Background:</b> GLIS2 is a 524 amino acid protein that belongs to the GLI C2H2- type zinc-finger protein family. By recruiting the corepressors CtBP1 and HDAC3, GLIS2 represses the transcriptional activation mediated by $\beta$ -catenin in the Wnt pathway. GLIS2 can act either as a transcription repressor or as a transcription activator and may be involved in neuron differentiation. Mutations of GLIS2 may be associated with development of progressive chronic kidney disease with characteristics resembling nephronophthisis. GLIS2 contains five tandem Cys(2)-His(2) zinc finger motifs that exhibit the highest homology to those of members of the GLI and Zic subfamilies of Krüppel-like proteins. GLIS2 is expressed at high levels in kidney and at low levels in heart, lung and placenta.		

**— VALIDATION IMAGES —**

Paraformaldehyde-fixed, paraffin embedded (mouse heart); Antigen retrieval by boiling in sodium citrate buffer (pH6.0) for 15min; Block endogenous peroxidase by 3% hydrogen peroxide for 20 minutes; Blocking buffer (normal goat serum) at 37°C for 30min; Antibody incubation with (GLIS2) Polyclonal Antibody, Unconjugated (bs-11566R) at 1:200 overnight at 4°C, followed by operating according to SP Kit(Rabbit) (sp-0023) instructions and DAB staining.



Paraformaldehyde-fixed, paraffin embedded (mouse brain); Antigen retrieval by boiling in sodium citrate buffer (pH6.0) for 15min; Block endogenous peroxidase by 3% hydrogen peroxide for 20 minutes; Blocking buffer (normal goat serum) at 37°C for 30min; Antibody incubation with (GLIS2) Polyclonal Antibody, Unconjugated (bs-11566R) at 1:200 overnight at 4°C, followed by operating according to SP Kit(Rabbit) (sp-0023) instructions and DAB staining.