

bs-2501R**[Primary Antibody]****KiSS1 receptor Rabbit pAb****Bioss**
ANTIBODIES

www.bioss.com.cn

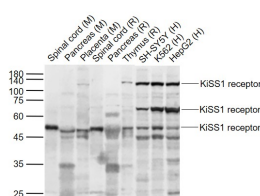
sales@bioss.com.cn

techsupport@bioss.com.cn

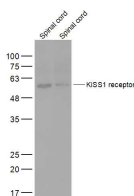
400-901-9800

DATASHEET

Host: Rabbit Clonality: Polyclonal GeneID: 84634 Target: KiSS1 receptor Immunogen: KLH conjugated synthetic peptide derived from human GPR54: 121-200/398. < Cytoplasmic > Purification: affinity purified by Protein A Concentration: 1mg/ml Storage: 0.01M TBS (pH7.4) with 1% BSA, 0.02% Proclin300 and 50% Glycerol. Shipped at 4°C. Store at -20°C for one year. Avoid repeated freeze/thaw cycles. Background: The protein encoded by this gene is a galanin-like G protein-coupled receptor that binds metastatin, a peptide encoded by the metastasis suppressor gene KISS1. The tissue distribution of the expressed gene suggests that it is involved in the regulation of endocrine function, and this is supported by the finding that this gene appears to play a role in the onset of puberty. Mutations in this gene have been associated with hypogonadotropic hypogonadism and central precocious puberty. [provided by RefSeq, Jul 2008]	Isotype: IgG SWISS: Q969F8	Applications: WB (1:500-2000) Reactivity: Human, Mouse, Rat (predicted: Pig, Sheep, Dog, GuineaPig) Predicted MW.: 44 kDa Subcellular Location: Cell membrane
--	---	---

VALIDATION IMAGES

Sample: Lane 1: Spinal cord (Mouse) Lysate at 40 ug
Lane 2: Pancreas (Mouse) Lysate at 40 ug
Lane 3: Placenta (Mouse) Lysate at 40 ug
Lane 4: Spinal cord (Rat) Lysate at 40 ug
Lane 5: Pancreas (Rat) Lysate at 40 ug
Lane 6: Thymus (Rat) Lysate at 40 ug
Lane 7: SH-SY5Y (Human) Cell Lysate at 30 ug
Lane 8: K562 (Human) Cell Lysate at 30 ug
Lane 9: HepG2 (Human) Cell Lysate at 30 ug
Primary: Anti-KiSS1 receptor (bs-2501R) at 1/1000 dilution
Secondary: IRDye800CW Goat Anti-Rabbit IgG at 1/20000 dilution
Predicted band size: 45-55/75/125 kD
Observed band size: 45-55/75/125 kD



Sample: Spinal cord (Mouse) Lysate at 40 ug
Spinal cord (Rat) Lysate at 40 ug
Primary: Anti-KiSS1 receptor (bs-2501R) at 1/2000 dilution
Secondary: IRDye800CW Goat Anti-Rabbit IgG at 1/20000 dilution
Predicted band size: 44 kD
Observed band size: 59 kD

SELECTED CITATIONS

- **[IF=6.17]** Yi Huang. et al. Kisspeptin-54 attenuates oxidative stress and neuronal apoptosis in early brain injury after subarachnoid hemorrhage in rats via GPR54/ARRB2/AKT/GSK3 β signaling pathway. Free Radical Bio Med. 2021 Aug;171:99 WB,IF,IP ;Rat. 33989759
- **[IF=4.736]** Lu Xiaosheng. et al. Deficiency of C1QL1 reduced murine ovarian follicle reserve through intraovarian and endocrine control. ENDOCRINOLOGY. 2022 Apr; IHC ;MOUSE. 10.1210/endo/bqac048

Important Note: This product as supplied is intended for research use only, not for use in human, therapeutic or diagnostic applications.

- **[IF=5.2]** Marianna Marino. et al. The interplay between kisspeptin and endocannabinoid systems modulates male hypothalamic and gonadic control of reproduction in vivo. FRONT ENDOCRINOL. 2023; 14: 1269334 IF,IHC ;Rat. 37900144
- **[IF=4.872]** Jin H et al. Microcystin-leucine arginine induced the apoptosis of GnRH neurons by activating the endoplasmic reticulum stress resulting in a decrease of serum testosterone level in mice Ecotoxicol Environ Saf. 2021 Jan 15;208:111748. IF ;Mouse. 33396074
- **[IF=4.096]** Elena Mele. et al. Differential Expression of Kisspeptin System and Kisspeptin Receptor Trafficking during Spermatozoa Transit in the Epididymis. Genes-Basel. 2022 Feb;13(2):295 IF ;Rat. 35205340