

**bs-17655R****[ Primary Antibody ]****BioSS**  
ANTIBODIES

www.bioss.com.cn

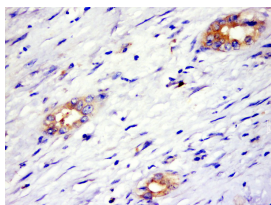
sales@bioss.com.cn

techsupport@bioss.com.cn

400-901-9800

**SPESP1 Rabbit pAb****— DATASHEET —**

<b>Host:</b> Rabbit	<b>Isotype:</b> IgG	<b>Applications:</b> <b>IHC-P</b> (1:100-500) <b>IHC-F</b> (1:100-500) <b>IF</b> (1:100-500)  <b>Reactivity:</b> Human (predicted: Rat, Rabbit)  <b>Predicted MW.:</b> 37 kDa
<b>Clonality:</b> Polyclonal		
<b>GeneID:</b> 246777	<b>SWISS:</b> Q6UW49	
<b>Target:</b> SPESP1		
<b>Immunogen:</b> KLH conjugated synthetic peptide derived from human SPESP1: 151-250/350.		
<b>Purification:</b> affinity purified by Protein A		
<b>Concentration:</b> 1mg/ml		
<b>Storage:</b> 0.01M TBS (pH7.4) with 1% BSA, 0.02% Proclin300 and 50% Glycerol. Shipped at 4°C. Store at -20°C for one year. Avoid repeated freeze/thaw cycles.		
<b>Background:</b> SPESP1 is a 399 amino acid protein belonging to the SPESP1 family. Localizing to cytoplasmic vesicle, secretory vesicle, and acrosome, SPESP1 is highly expressed in testis, with lower levels found in placenta and fetal lung. SPESP1 establishes an equatorial segment subcompartment early in sperm development and is required for proper sperm-egg fusion. Disruption of SPESP1 leads to abnormal distribution of sperm proteins resulting in a detached membrane from the equatorial segment and less fertile sperm. SPESP1 may interact with IZUMO1 and MN9 antigen and contains an N-glycosylation site as well as several cAMP-dependent kinase, protein kinase C, and casein kinase II consensus phosphorylation sites.		

**— VALIDATION IMAGES —**

Paraformaldehyde-fixed, paraffin embedded (human liver cancer); Antigen retrieval by boiling in sodium citrate buffer (pH6.0) for 15min; Block endogenous peroxidase by 3% hydrogen peroxide for 20 minutes; Blocking buffer (normal goat serum) at 37°C for 30min; Antibody incubation with (SPESP1) Polyclonal Antibody, Unconjugated (bs-17655R) at 1:800 overnight at 4°C, followed by a conjugated secondary (sp-0023) for 20 minutes and DAB staining.