

bs-17651R**[Primary Antibody]****SPEF1 Rabbit pAb****BioSS**
ANTIBODIES

www.bioss.com.cn

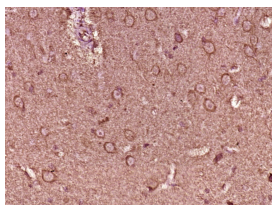
sales@bioss.com.cn

techsupport@bioss.com.cn

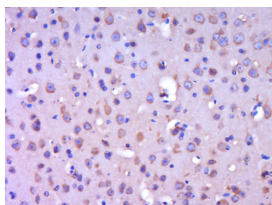
400-901-9800

— DATASHEET —

Host: Rabbit	Isotype: IgG	Applications: IHC-P (1:100-500) IHC-F (1:100-500) IF (1:100-500)
Clonality: Polyclonal		
GeneID: 25876	SWISS: Q9Y4P9	
Target: SPEF1		
Immunogen: KLH conjugated synthetic peptide derived from human SPEF1: 181-236/236.		
Purification: affinity purified by Protein A		
Concentration: 1mg/ml		Reactivity: Mouse, Rat (predicted: Human, Rabbit, Pig, Sheep, Cow)
Storage: 0.01M TBS (pH7.4) with 1% BSA, 0.02% Proclin300 and 50% Glycerol. Shipped at 4°C. Store at -20°C for one year. Avoid repeated freeze/thaw cycles.		Predicted MW.: 27 kDa
Background: CLAMP is a 236 amino acid protein that is present in epididymal sperm and localizes to the cell projection, as well as to the cytoplasm. Expressed in lung, brain and testis, CLAMP functions as a microtubule-associated protein that is thought to play a role in microtubule bundling. Human CLAMP exists as two alternatively spliced isoforms and shares a high degree of homology with its mouse counterpart, suggesting a conserved role between species. The gene encoding CLAMP maps to human chromosome 20, which houses over 600 genes and comprises nearly 2% of the human genome.		Subcellular Location: Cytoplasm

— VALIDATION IMAGES —

Paraformaldehyde-fixed, paraffin embedded (Rat brain); Antigen retrieval by boiling in sodium citrate buffer (pH6.0) for 15min; Block endogenous peroxidase by 3% hydrogen peroxide for 20 minutes; Blocking buffer (normal goat serum) at 37°C for 30min; Antibody incubation with (SPEF1) Polyclonal Antibody, Unconjugated (bs-17651R) at 1:400 overnight at 4°C, followed by operating according to SP Kit(Rabbit) (sp-0023) instructions and DAB staining.



Paraformaldehyde-fixed, paraffin embedded (Mouse brain); Antigen retrieval by boiling in sodium citrate buffer (pH6.0) for 15min; Block endogenous peroxidase by 3% hydrogen peroxide for 20 minutes; Blocking buffer (normal goat serum) at 37°C for 30min; Antibody incubation with (SPEF1) Polyclonal Antibody, Unconjugated (bs-17651R) at 1:400 overnight at 4°C, followed by operating according to SP Kit(Rabbit) (sp-0023) instructions and DAB staining.