

bs-2431R**[Primary Antibody]****TNFSF13B Rabbit pAb****BioSS**
ANTIBODIES

www.bioss.com.cn

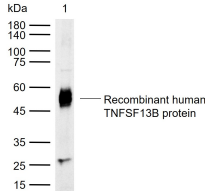
sales@bioss.com.cn

techsupport@bioss.com.cn

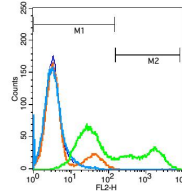
400-901-9800

DATASHEET

<p>Host: Rabbit</p> <p>Clonality: Polyclonal</p> <p>GeneID: 24099</p> <p>Target: TNFSF13B</p> <p>Immunogen: KLH conjugated synthetic peptide derived from mouse TNFSF13B: 221-309/309.</p> <p>Purification: affinity purified by Protein A</p> <p>Concentration: 1mg/ml</p> <p>Storage: 0.01M TBS (pH7.4) with 1% BSA, 0.02% Proclin300 and 50% Glycerol. Shipped at 4°C. Store at -20°C for one year. Avoid repeated freeze/thaw cycles.</p> <p>Background: The protein encoded by this gene is a cytokine that belongs to the tumor necrosis factor (TNF) ligand family. This cytokine is a ligand for receptors TNFRSF13B/TACI, TNFRSF17/BCMA, and TNFRSF13C/BAFFR. This cytokine is expressed in B cell lineage cells, and acts as a potent B cell activator. It has been also shown to play an important role in the proliferation and differentiation of B cells. [provided by RefSeq].</p>	<p>Isotype: IgG</p> <p>SWISS: Q9WU72</p>	<p>Applications: WB (1:500-2000) Flow-Cyt (3µg/Test) ELISA (1:5000-10000)</p> <p>Reactivity: Human (predicted: Mouse, Rat, Rabbit, Pig, Cow)</p> <p>Predicted MW.: 34 kDa</p> <p>Subcellular Location: Secreted ,Cell membrane</p>
--	--	---

VALIDATION IMAGES

Sample: Lane 1: Recombinant human TNFSF13B protein, N-His(bs-43649P) Primary: Anti-TNFSF13B (bs-2431R) at 1/1000 dilution Secondary: IRDye800CW Goat Anti-Rabbit IgG at 1/20000 dilution Predicted band size: 34 kDa Observed band size: 52 kDa



Blank control(blue). : Jurkat cells(fixed with 2% paraformaldehyde (10 min)). Primary Antibody:Rabbit Anti-BAFF antibody(bs-2431R), Dilution: 3µg in 100 µL 1X PBS containing 0.5% BSA; Isotype Control Antibody: Rabbit IgG(orange) ,used under the same conditions); Secondary Antibody: Goat anti-rabbit IgG-PE(white blue), Dilution: 1:200 in 1 X PBS containing 0.5% BSA.

SELECTED CITATIONS

- **[IF=9.423]** Zewen Kelvin Tuong. et al. Resolving the immune landscape of human prostate at a single-cell level in health and cancer. Cell Rep. 2021 Dec;37:110132 IF ;Human,Mouse. 34936871
- **[IF=4]** Pengpeng Zhu. et al. The Polysaccharide from Dendrobium officinale Can Improve Mice with Sjögren' s Syndrome by Regulating BAFF and Fas Expressions. J FOOD BIOCHEM. 2023;2023:4733651 IHC ;Mouse. 10.1155/2023/4733651
- **[IF=3.9]** Astrid K Kardani. et al.Protective Effects of Physalis angulata on Podocytopathies Through B-Cell-Activating Factor Inhibition in Doxorubicin-Induced Nephrotic Syndrome Rat Model..Biomedicines.2025 Mar 14;13(3):719. IF ;Rat. 40149694