

bs-16782R**[Primary Antibody]****KLRC4 Rabbit pAb****Bioss**
ANTIBODIES

www.bioss.com.cn

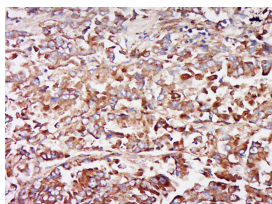
sales@bioss.com.cn

techsupport@bioss.com.cn

400-901-9800

— DATASHEET —

Host: Rabbit	Isotype: IgG	Applications: IHC-P (1:100-500)
Clonality: Polyclonal		IHC-F (1:100-500)
GeneID: 8302	SWISS: O43908	IF (1:100-500)
Target: KLRC4		Reactivity: Human
Immunogen: KLH conjugated synthetic peptide derived from human KLRC4: 51-150/158. < Extracellular >		
Purification: affinity purified by Protein A		Predicted MW.: 18 kDa
Concentration: 1mg/ml		Subcellular Location: Cell membrane
Storage: 0.01M TBS (pH7.4) with 1% BSA, 0.02% Proclin300 and 50% Glycerol. Shipped at 4°C. Store at -20°C for one year. Avoid repeated freeze/thaw cycles.		
Background: Natural killer (NK) cells are lymphocytes that can mediate lysis of certain tumor cells and virus-infected cells without previous activation. They can also regulate specific humoral and cell-mediated immunity. NK cells preferentially express several calcium-dependent (C-type) lectins, which have been implicated in the regulation of NK cell function. This gene is a member of the NKG2 group of genes that are expressed primarily in natural killer (NK) cells. These family members encode transmembrane proteins that are characterized by a type II membrane orientation (have an extracellular C-terminus) and the presence of a C-type lectin domain. This family member is located within the NK complex, a region that contains several C-type lectin genes preferentially expressed in NK cells. Read-through transcription exists between this gene and the downstream KLRK1 (killer cell lectin-like receptor subfamily K, member 1) family member. [provided by RefSeq, Dec 2010]		

— VALIDATION IMAGES —

Tissue/cell: human lung carcinoma; 4% Paraformaldehyde-fixed and paraffin-embedded; Antigen retrieval: citrate buffer (0.01M, pH 6.0), Boiling bathing for 15min; Block endogenous peroxidase by 3% Hydrogen peroxide for 30min; Blocking buffer (normal goat serum, C-0005) at 37°C for 20 min; Incubation: Anti-KLRC4 Polyclonal Antibody, Unconjugated(bs-16782R) 1:500, overnight at 4°C, followed by conjugation to the secondary antibody(SP-0023) and DAB(C-0010) staining