
Klra3 Rabbit pAb

Catalog Number: bs-16779R

Target Protein: Klra3

Concentration: 1mg/ml

Form: Liquid

Host: Rabbit

Clonality: Polyclonal

Isotype: IgG

Applications: WB (1:500-2000)

Reactivity: Mouse

Predicted MW: 31 kDa

Entrez Gene: 16634

Swiss Prot: Q64329

Source: KLH conjugated synthetic peptide derived from mouse KLRA3: 51-150/266.

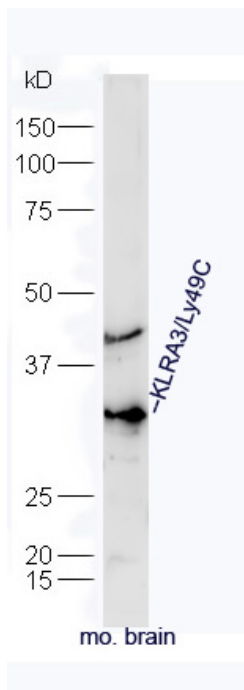
Purification: affinity purified by Protein A

Storage: 0.01M TBS (pH7.4) with 1% BSA, 0.02% Proclin300 and 50% Glycerol.

Shipped at 4°C. Store at -20°C for one year. Avoid repeated freeze/thaw cycles.

Background: KLRA3 (also known as Ly49C) is a member of the LY49 family of receptors in Natural Killer (NK) cells that bind to major histocompatibility complex (MHC) class 1. These proteins are classified as either activating or inhibitory receptors based on whether they possess an immunoreceptor tyrosine-based inhibitory motif (ITIM) in their cytoplasmic region (for inhibitory receptors), or an immunoreceptor tyrosine-based activation motif (ITAM) that transmits activating signals resulting in phosphorylation of several substrates. KLRA3 is thought to be an inhibitory receptor, recognizing peptide-receptive H-2Kb.

VALIDATION IMAGES



Protein: brain(mouse) lysate at 40ug; Primary: rabbit Anti-KLRA3/Ly49C (bs-16779R) at 1:300; Secondary: HRP conjugated Goat-Anti-rabbit IgG(bs-0295G-HRP) at 1: 5000; Predicted band size: 31 kD Observed band size: 31 kD