

bs-16773R

[Primary Antibody]

KLHL5 Rabbit pAb

Bioss
ANTIBODIES

www.bioss.com.cn

sales@bioss.com.cn

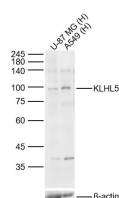
techsupport@bioss.com.cn

400-901-9800

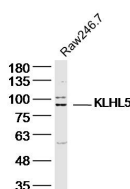
— DATASHEET —

Host: Rabbit	Isotype: IgG	Applications: WB (1:500-2000)
Clonality: Polyclonal		Reactivity: Human, Mouse (predicted: Rat, Sheep, Cow, Dog, Horse)
GeneID: 51088	SWISS: Q96PQ7	Predicted MW.: 84 kDa
Target: KLHL5		Subcellular Location: Cytoplasm
Immunogen: KLH conjugated synthetic peptide derived from human KLHL5: 1-100/755.		
Purification: affinity purified by Protein A		
Concentration: 1mg/ml		
Storage: 0.01M TBS (pH7.4) with 1% BSA, 0.02% Proclin300 and 50% Glycerol. Shipped at 4°C. Store at -20°C for one year. Avoid repeated freeze/thaw cycles.		
Background: The kelch repeat protein family is an actin binding protein. It is characterized by tandemly arranged motifs of about 50 amino acids. Most members of the kelch repeat family were cytoskeletal proteins implicated in various cellular processes, such as actin cytoskeleton interaction, cytoplasmic sequestration of transcription factors and cell morphology. KLHL5 has high identity with Drosophila kelch protein and many other family members. A novel splicing variant of KLHL5, named KLHL5b, has been identified.		

— VALIDATION IMAGES —



Sample: Lane 1: Human U-87 MG cell Lysates
Lane 2: Human A549 cell Lysates Primary: Anti-
KLHL5 (bs-16773R) at 1/1000 dilution Secondary:
IRDye800CW Goat Anti-Rabbit IgG at 1/20000
dilution Predicted band size: 84kDa Observed
band size: 100kDa



Sample: Raw264.7 (Mouse) Lysate at 40 ug
Primary: Anti-KLHL5 (bs-16773R) at 1/300
dilution Secondary: IRDye800CW Goat Anti-
Rabbit IgG at 1/20000 dilution Predicted band
size: 84 kD Observed band size: 84 kD