

bs-16807R

[Primary Antibody]

KPRP Rabbit pAb

Bioss
ANTIBODIES

www.bioss.com.cn

sales@bioss.com.cn

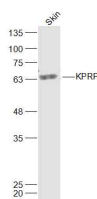
techsupport@bioss.com.cn

400-901-9800

— DATASHEET —

Host: Rabbit	Isotype: IgG	Applications: WB (1:500-2000)
Clonality: Polyclonal		
GeneID: 448834	SWISS: Q5T749	
Target: KPRP		
Immunogen: KLH conjugated synthetic peptide derived from human KPRP: 181-280/579.		
Purification: affinity purified by Protein A		Reactivity: Human, Rat
Concentration: 1mg/ml		
Storage: 0.01M TBS (pH7.4) with 1% BSA, 0.02% Proclin300 and 50% Glycerol. Shipped at 4°C. Store at -20°C for one year. Avoid repeated freeze/thaw cycles.		Predicted MW.: 64 kDa
		Subcellular Location: Cytoplasm

— VALIDATION IMAGES —



Sample: Skin (Rat) Lysate at 40 ug Primary: Anti-KPRP (bs-16807R) at 1/300 dilution Secondary: IRDye800CW Goat Anti-Rabbit IgG at 1/20000 dilution Predicted band size: 64 kD Observed band size: 64 kD