

bs-9268R**[Primary Antibody]****fbpB Rabbit pAb****Bioss**
ANTIBODIES

www.bioss.com.cn

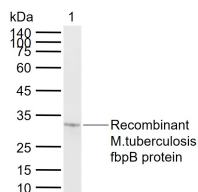
sales@bioss.com.cn

techsupport@bioss.com.cn

400-901-9800

— DATASHEET —

Host: Rabbit Clonality: Polyclonal Target: fbpB Immunogen: KLH conjugated synthetic peptide derived from Mycobacterium tuberculosis Ag85B: 231-325/325. Purification: affinity purified by Protein A Concentration: 1mg/ml Storage: 0.01M TBS (pH7.4) with 1% BSA, 0.02% Proclin300 and 50% Glycerol. Shipped at 4°C. Store at -20°C for one year. Avoid repeated freeze/thaw cycles. Background: Antigen 85B is the most abundant protein expressed by Mycobacterium tuberculosis (about one quarter). It is a mycolyl transferase in the myc pathway and catalyses - like Ag85A and Ag85C - the transfer of the fatty acid mycolate from one trehalose monomycolate to another, resulting in trehalose dimycolate and free trehalose and helping build the cell wall.	Isotype: IgG Applications: WB (1:500-2000) Reactivity: Mycobacterium tuberculosis Predicted MW.: 31 kDa Subcellular Location: Secreted
--	---

— VALIDATION IMAGES —

Sample: Lane 1: Recombinant M.tuberculosis fbpB protein Primary: Anti-fbpB (bs-9268R) at 1/1000 dilution Secondary: IRDye800CW Goat Anti-Rabbit IgG at 1/20000 dilution Predicted band size: 31 kDa Observed band size: 31 kDa

— SELECTED CITATIONS —

- **[IF=2.738]** Liang Wang et al. Clinical Significance of M1/M2 Macrophages and Related Cytokines in Patients with Spinal Tuberculosis. Dis Markers. 2020 May 20;2020:2509454. IHC ;Human. 32566036
- **[IF=1.785]** Xiaoqian Shang. et al. Diagnostic value of CXCR3 and its ligands in spinal tuberculosis. Exp Ther Med. 2021 Jan;21(1):1-1 IHC ;Human. 33365073