

**bs-9320R**

**[ Primary Antibody ]**

## HAUS8 Rabbit pAb

**Bioss**  
ANTIBODIES

www.bioss.com.cn

sales@bioss.com.cn

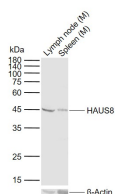
techsupport@bioss.com.cn

400-901-9800

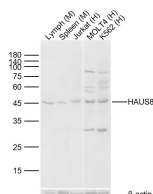
### — DATASHEET —

<b>Host:</b> Rabbit	<b>Isotype:</b> IgG	<b>Applications:</b> <b>WB</b> (1:500-2000) <b>IHC-P</b> (1:100-500) <b>IHC-F</b> (1:100-500) <b>IF</b> (1:50-200) <b>ELISA</b> (1:5000-10000)  <b>Reactivity:</b> Human, Mouse (predicted: Rat, Dog)  <b>Predicted MW.:</b> 45 kDa  <b>Subcellular Location:</b> Cytoplasm
<b>Clonality:</b> Polyclonal		
<b>GeneID:</b> 93323	<b>SWISS:</b> Q9BT25	
<b>Target:</b> HAUS8		
<b>Immunogen:</b> Recombinant human HAUS8 protein: 166-410/410.		
<b>Purification:</b> affinity purified by Protein A		
<b>Concentration:</b> 1mg/ml		
<b>Storage:</b> 0.01M TBS (pH7.4) with 1% BSA, 0.02% Proclin300 and 50% Glycerol. Shipped at 4°C. Store at -20°C for one year. Avoid repeated freeze/thaw cycles.		
<b>Background:</b> NYS48 belongs to the HAUS8 family. It is required for stabilizing spindle integrity and chromosomal integrity.		

### — VALIDATION IMAGES —



Sample: Lane 1: Mouse Lymph node tissue lysates Lane 2: Mouse Spleen tissue lysates  
Primary: Anti- HAUS8 (bs-9320R) at 1/1000 dilution Secondary: IRDye800CW Goat Anti-Rabbit IgG at 1/20000 dilution Predicted band size: 45 kDa Observed band size: 45 kDa



Sample: Lane 1: Mouse Lymph Lysates Lane 2: Mouse Spleen Lysates Lane 3: Human Jurkat cell Lysates Lane 4: Human MOLT4 cell Lysates Lane 5: Human K562 cell Lysates Primary: Anti-HAUS8 (bs-9320R) at 1/1000 dilution Secondary: IRDye800CW Goat Anti-Rabbit IgG at 1/20000 dilution Predicted band size: 45kDa Observed band size: 45kDa