

[Primary Antibody]

ASZ1 Rabbit pAb



BioSS
ANTIBODIES

www.bioss.com.cn

sales@bioss.com.cn

techsupport@bioss.com.cn

400-901-9800

— DATASHEET

Host: Rabbit

Isotype: IgG

Applications: WB (1:500-2000)

Clonality: Polyclonal

GeneID: 136991

SWISS: O8WWH4

Target: ASZ1

Immunogen: KLH conjugated synthetic peptide derived from human ASZ1: 151-250/475.

Purification: affinity purified by Protein A

Concentration: 1mg/ml

Storage: 0.01M TBS (pH7.4) with 1% BSA, 0.02% Proclin300 and 50% Glycerol.

Shipped at 4°C. Store at -20°C for one year. Avoid repeated freeze/thaw cycles.

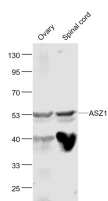
Background: ASZ1 (ankyrin repeat, SAM and basic leucine zipper domain-containing protein 1), also known as ANKL1, ALP1 (Ankyrin-like protein 1), GASZ (germ cell-specific ankyrin, SAM and basic leucine zipper domain-containing protein) or Orf3, is a 475 amino acid protein that is suggested to function as a signal transducer during germ cell maturation. Localized to the cytoplasm of pachytene spermatocytes, early spermatids and oocytes, ASZ1 is primarily found in adult testis and ovary where it mediates protein-protein interactions. ASZ1 contains six ANK repeats, one SAM (sterile alpha motif) domain and is encoded by a gene located on human chromosome 7q31, a region that may have an important role in the development certain types of human cancer.

Reactivity: Mouse (predicted: Human, Rat, Horse)

Predicted
MW.: 53 kDa

Subcellular Location: Cytoplasm

— VALIDATION IMAGES



Sample: Ovary(Mouse) Lysate at 40 ug Spinal
cord(Mouse) Lysate at 40 ug Primary: Anti-ASZ1
(bs-9325R) at 1/1000 dilution Secondary:
IRDye800CW Goat Anti-Rabbit IgG at 1/20000
dilution Predicted band size: 53 kD Observed
band size: 53 kD