

**bs-16760R****[ Primary Antibody ]****KLHDC4 Rabbit pAb****BioSS**  
**ANTIBODIES**

www.bioss.com.cn

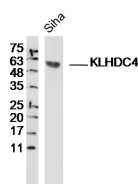
sales@bioss.com.cn

techsupport@bioss.com.cn

400-901-9800

**— DATASHEET —**

<b>Host:</b> Rabbit	<b>Isotype:</b> IgG	<b>Applications:</b> WB (1:500-2000)
<b>Clonality:</b> Polyclonal		
<b>GeneID:</b> 54758	<b>SWISS:</b> Q8TBB5	
<b>Target:</b> KLHDC4		
<b>Immunogen:</b> KLH conjugated synthetic peptide derived from human KLHDC4: 201-300/520.		
<b>Purification:</b> affinity purified by Protein A		<b>Reactivity:</b> Human (predicted: Mouse, Rat, Dog, Horse)
<b>Concentration:</b> 1mg/ml		<b>Predicted MW.:</b> 58 kDa
<b>Storage:</b> 0.01M TBS (pH7.4) with 1% BSA, 0.02% Proclin300 and 50% Glycerol. Shipped at 4°C. Store at -20°C for one year. Avoid repeated freeze/thaw cycles.		<b>Subcellular Location:</b> Nucleus
<b>Background:</b> KLHDC4 is a 520 amino acid protein that contains six kelch repeats and exists as three alternatively spliced isoforms. The gene encoding KLHDC4 maps to human chromosome 16q24.2 and mouse chromosome 8 E1. Chromosome 16 encodes over 900 genes in approximately 90 million base pairs, makes up nearly 3% of human cellular DNA and is associated with a variety of genetic disorders. The GAN gene is located on chromosome 16 and, with mutation, may lead to giant axonal neuropathy, a nervous system disorder characterized by increasing malfunction with growth. The rare disorder Rubinstein-Taybi syndrome is also associated with chromosome 16, through the CREBBP gene which encodes a critical CREB binding protein. Signs of Rubinstein-Taybi include mental retardation and predisposition to tumor growth and white blood cell neoplasias. Crohn's disease is a gastrointestinal inflammatory condition associated with chromosome 16 through the NOD2 gene.		

**— VALIDATION IMAGES —**

Sample: SiHa (human) cell Lysate at 40 ug  
Primary: Anti-KLHDC4(bs-16760R) at 1/300  
dilution Secondary: IRDye800CW Goat Anti-Rabbit IgG at 1/20000 dilution Predicted band size: 58 kD Observed band size: 58 kD