

bs-18879R**[Primary Antibody]****RSPRY1 Rabbit pAb****BioSS**
ANTIBODIES

www.bioss.com.cn

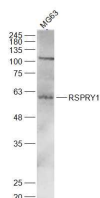
sales@bioss.com.cn

techsupport@bioss.com.cn

400-901-9800

— DATASHEET —

Host: Rabbit	Isotype: IgG	Applications: WB (1:500-2000)
Clonality: Polyclonal		Reactivity: Human (predicted: Mouse, Rat, Rabbit, Pig, Cow, Zebrafish, Chicken, Dog, Horse, Chimpanzee)
GeneID: 89970	SWISS: Q96DX4	Predicted MW.: 62 kDa
Target: RSPRY1		Subcellular Location: Secreted
Immunogen: KLH conjugated synthetic peptide derived from human RSPRY1: 51-150/576.		
Purification: affinity purified by Protein A		
Concentration: 1mg/ml		
Storage: 0.01M TBS (pH7.4) with 1% BSA, 0.02% Proclin300 and 50% Glycerol. Shipped at 4°C. Store at -20°C for one year. Avoid repeated freeze/thaw cycles.		
Background: RSPRY1 is a 576 amino acid secreted protein that contains one RING-type zinc finger and a B30.2/SPRY domain. Existing as two alternatively spliced isoforms, RSPRY1 is encoded by a gene that maps to human chromosome 16q13. Chromosome 16 encodes over 900 genes and comprises nearly 3% of the human genome. The GAN gene is located on chromosome 16 and, with mutation, may lead to giant axonal neuropathy, a nervous system disorder characterized by increasing malfunction with growth. The rare disorder Rubinstein-Taybi syndrome is also associated with chromosome 16, as is Crohn's disease, which is a gastrointestinal inflammatory condition.		

— VALIDATION IMAGES —

Sample: MG63(Human) Cell Lysate at 30 ug
Primary: Anti-RSPRY1 (bs-18879R) at 1/1000
dilution Secondary: IRDye800CW Goat Anti-
Rabbit IgG at 1/20000 dilution Predicted band
size: 62 kD Observed band size: 60 kD