

RSPO3 Rabbit pAb

Catalog Number: bs-18877R

Target Protein: RSPO3

Concentration: 1mg/ml

Form: Liquid

Host: Rabbit

Clonality: Polyclonal

Isotype: IgG

Applications: WB (1:500-2000)

Reactivity: Human (predicted: Mouse, Rat, Rabbit, Pig, Cow, Dog, Cat, Guinea Pig, Horse)

Predicted MW: 31 kDa

Entrez Gene: 84870

Swiss Prot: Q9BXY4

Source: KLH conjugated synthetic peptide derived from human RSPO3: 22-100/272.

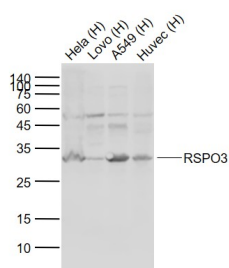
Purification: affinity purified by Protein A

Storage: 0.01M TBS (pH7.4) with 1% BSA, 0.02% Proclin300 and 50% Glycerol.

Shipped at 4°C. Store at -20°C for one year. Avoid repeated freeze/thaw cycles.

Background: This gene belongs to the R-spondin family. The encoded protein plays a role in the regulation of Wnt (wingless-type MMTV integration site family)/beta-catenin and Wnt/planar cell polarity (PCP) signaling pathways, which are involved in development, cell growth and disease pathogenesis. Genome-wide association studies suggest a correlation of this gene with bone mineral density and risk of fracture. This gene may be involved in tumor development. [provided by RefSeq, Jul 2013]

VALIDATION IMAGES



Sample: Lane 1: Human Hela cell lysates Lane 2: Human Lovo cell lysates Lane 3: Human A549 cell lysates
Lane 4: Human Huvec cell lysates Primary: Anti-RSPO3 (bs-18877R) at 1/1000 dilution Secondary:
IRDye800CW Goat Anti-Rabbit IgG at 1/20000 dilution Predicted band size: 31 kD Observed band size: 31 kD