

bs-18876R**[Primary Antibody]****RSPO2 Rabbit pAb****Bioss**
ANTIBODIES

www.bioss.com.cn

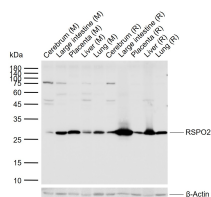
sales@bioss.com.cn

techsupport@bioss.com.cn

400-901-9800

DATASHEET

Host: Rabbit	Isotype: IgG	Applications: WB (1:500-2000)
Clonality: Polyclonal		Reactivity: Mouse, Rat (predicted: Human, Pig, Cow, Dog)
GeneID: 340419	SWISS: Q6UXX9	Predicted MW.: 26 kDa
Target: RSPO2		Subcellular Location: Secreted
Immunogen: KLH conjugated synthetic peptide derived from human RSPO2: 22-100/243.		
Purification: affinity purified by Protein A		
Concentration: 1mg/ml		
Storage: 0.01M TBS (pH7.4) with 1% BSA, 0.02% Proclin300 and 50% Glycerol. Shipped at 4°C. Store at -20°C for one year. Avoid repeated freeze/thaw cycles.		
Background: R-spondins (RSPOs), such as RSPO2, are secreted proteins that regulate beta-catenin (CTNNB1; MIM 116806) signaling (Kim et al., 2006 [PubMed 16357527]).[supplied by OMIM, Mar 2008]		

VALIDATION IMAGES

Sample: Lane 1: Mouse Cerebrum tissue lysates
 Lane 2: Mouse Large intestine tissue lysates Lane 3: Mouse Placenta tissue lysates Lane 4: Mouse Liver tissue lysates Lane 5: Mouse Lung tissue lysates Lane 6: Rat Cerebrum tissue lysates Lane 7: Rat Large intestine tissue lysates Lane 8: Rat Placenta tissue lysates Lane 9: Rat Liver tissue lysates Lane 10: Rat Lung tissue lysates Primary: Anti-RSPO2 (bs-18876R) at 1/1000 dilution Secondary: IRDye800CW Goat Anti-Rabbit IgG at 1/20000 dilution Predicted band size: 26 kDa Observed band size: 28 kDa