

RSBN1 Rabbit pAb

Catalog Number: bs-18865R

Target Protein: RSBN1

Concentration: 1mg/ml

Form: Liquid

Host: Rabbit

Clonality: Polyclonal

Isotype: IgG

Applications: WB (1:500-2000)

Reactivity: Mouse (predicted:Human, Rat, Rabbit, Dog)

Predicted MW: 90 kDa

Entrez Gene: 54665

Swiss Prot: Q5VWQ0

Source: KLH conjugated synthetic peptide derived from human RSBN1: 21-120/802.

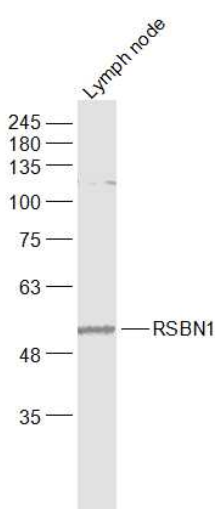
Purification: affinity purified by Protein A

Storage: 0.01M TBS (pH7.4) with 1% BSA, 0.02% Proclin300 and 50% Glycerol.

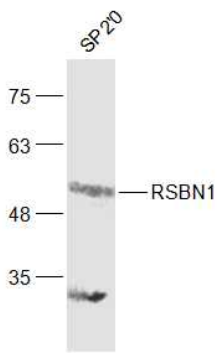
Shipped at 4°C. Store at -20°C for one year. Avoid repeated freeze/thaw cycles.

Background: RSBN1 belongs to the round spermatid basic protein 1 family. The function of this protein remains unknown.

VALIDATION IMAGES



Sample: Lymph node (Mouse) Lysate at 40 ug Primary: Anti-RSBN1 (bs-18865R) at 1/1000 dilution Secondary: IRDye800CW Goat Anti-Rabbit IgG at 1/20000 dilution Predicted band size: 90 kD Observed band size: 50 kD



Sample: SP2/0(Mouse) Cell Lysate at 30 ug Primary: Anti-RSBN1 (bs-18865R) at 1/1000 dilution Secondary: IRDye800CW Goat Anti-Rabbit IgG at 1/20000 dilution Predicted band size: 90 kD Observed band size: 50 kD