

**bs-16658R****[ Primary Antibody ]****INHBE Rabbit pAb****BioSS**  
**ANTIBODIES**

www.bioss.com.cn

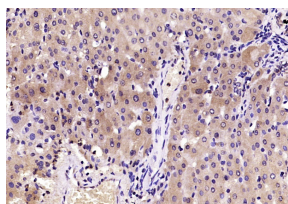
sales@bioss.com.cn

techsupport@bioss.com.cn

400-901-9800

**— DATASHEET —**

<b>Host:</b> Rabbit	<b>Isotype:</b> IgG	<b>Applications:</b> <b>IHC-P</b> (1:100-500) <b>IHC-F</b> (1:100-500) <b>IF</b> (1:100-500)
<b>Clonality:</b> Polyclonal		
<b>GeneID:</b> 83729	<b>SWISS:</b> P58166	
<b>Target:</b> INHBE		<b>Reactivity:</b> Human (predicted: Mouse, Rat, Pig, Sheep, Cow, Dog, Horse)
<b>Immunogen:</b> KLH conjugated synthetic peptide derived from human INHBE: 201-300/350.		
<b>Purification:</b> affinity purified by Protein A		<b>Predicted MW.:</b> 12.5 kDa
<b>Concentration:</b> 1mg/ml		<b>Subcellular Location:</b> Secreted
<b>Storage:</b> Size : 50ul/100ul/200ul 0.01M TBS (pH7.4) with 1% BSA, 0.02% Proclin300 and 50% Glycerol. Shipped at 4°C. Store at -20°C for one year. Avoid repeated freeze/thaw cycles.		
<b>Background:</b> INHBE is a member of the activin beta family (see INHBA; MIM 147290) that plays a role in pancreatic exocrine cell growth and proliferation (Hashimoto et al., 2006 [PubMed 16426570]).[supplied by OMIM, May 2008]		

**— VALIDATION IMAGES —**

Paraformaldehyde-fixed, paraffin embedded (human liver tissue); Antigen retrieval by boiling in sodium citrate buffer (pH6.0) for 15min; Block endogenous peroxidase by 3% hydrogen peroxide for 20 minutes; Blocking buffer (normal goat serum) at 37°C for 30min; Antibody incubation with (INHBE) Polyclonal Antibody, Unconjugated (bs-16658R) at 1:200 overnight at 4°C, followed by operating according to SP Kit(Rabbit) (sp-0023) instructions and DAB staining.

**— SELECTED CITATIONS —**

- **[IF=3.9]** Weipu Mao. et al.Expression and distribution of activin-follistatin-inhibin axis in the urinary bladder..Frontiers in Molecular Biosciences.2025 Mar 12:12:1519977. Western blot ;Mouse. 40144023