

ING2 Rabbit pAb

Catalog Number: bs-16653R

Target Protein: ING2

Concentration: 1mg/ml

Form: Liquid

Host: Rabbit

Clonality: Polyclonal

Isotype: IgG

Applications: WB (1:500-2000)

Reactivity: Human (predicted: Mouse, Rat, Rabbit, Pig, Sheep, Dog, Horse)

Predicted MW: 33 kDa

Subcellular Nucleus

Locations:

Entrez Gene: 3622

Swiss Prot: Q9H160

Source: KLH conjugated synthetic peptide derived from human ING2: 151-250/280.

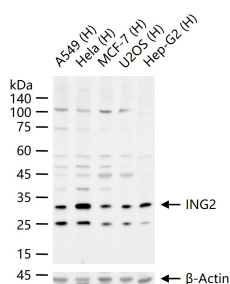
Purification: affinity purified by Protein A

Storage: 0.01M TBS (pH7.4) with 1% BSA, 0.02% Proclin300 and 50% Glycerol.

Shipped at 4°C. Store at -20°C for one year. Avoid repeated freeze/thaw cycles.

Background: This gene is a member of the inhibitor of growth (ING) family. Members of the ING family associate with and modulate the activity of histone acetyltransferase (HAT) and histone deacetylase (HDAC) complexes and function in DNA repair and apoptosis. [provided by RefSeq, Jul 2008]

VALIDATION IMAGES



25 ug total protein per lane of various lysates (see on figure) probed with ING2 polyclonal antibody, unconjugated (bs-16653R) at 1:1000 dilution and 4°C overnight incubation. Followed by conjugated secondary antibody incubation at r.t. for 60 min.