

bs-0588R**[Primary Antibody]****PALB2 Rabbit pAb**

Bioss
ANTIBODIES

www.bioss.com.cn

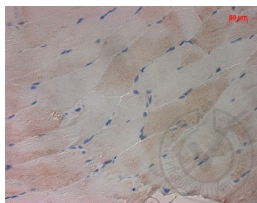
sales@bioss.com.cn

techsupport@bioss.com.cn

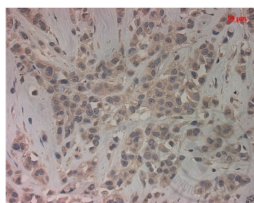
400-901-9800

DATASHEET

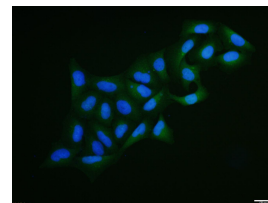
Host: Rabbit	Isotype: IgG	Applications: IHC-P (1:100-500) IHC-F (1:100-500) IF (1:100-500) Flow-Cyt (1µg/Test) ICC/IF (1:100) Reactivity: Human, Pig (predicted: Mouse, Rat, Cow) Predicted MW.: 131 kDa Subcellular Location: Nucleus
Clonality: Polyclonal		
GeneID: 79728	SWISS: Q86YC2	
Target: PALB2		
Immunogen: KLH conjugated synthetic peptide derived from human PALB2: 1101-1186/1186.		
Purification: affinity purified by Protein A		
Concentration: 1mg/ml		
Storage: 0.01M TBS (pH7.4) with 1% BSA, 0.02% Proclin300 and 50% Glycerol. Shipped at 4°C. Store at -20°C for one year. Avoid repeated freeze/thaw cycles.		
Background: This gene encodes a protein that may function in tumor suppression. This protein binds to and colocalizes with the breast cancer 2 early onset protein (BRCA2) in nuclear foci and likely permits the stable intranuclear localization and accumulation of BRCA2. Essential partner of BRCA2 that promotes the localization and stability of BRCA2. Also enables its recombinational repair and checkpoint functions of BRCA2. May act by promoting stable association of BRCA2 with nuclear structures, allowing BRCA2 to escape the effects of proteasome-mediated degradation.		

VALIDATION IMAGES

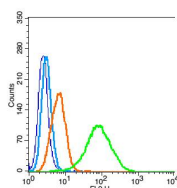
Independently Validated Antibody, image provided by Science Direct, badge number 029682: Formalin-fixed and paraffin embedded pig skeletal muscle labeled with Rabbit Anti-PALB2 Polyclonal Antibody, Unconjugated (bs-0588R) at 1:100 for one hour at room temperature followed by conjugation to the secondary antibody Mach2 rabbit HRP-Polymer for 30 min at room temperature and DAB staining.



Independently Validated Antibody, image provided by Science Direct, badge number 029682: Formalin-fixed and paraffin embedded human breast cancer labeled with Rabbit Anti-PALB2 Polyclonal Antibody, Unconjugated (bs-0588R) at 1:100 from one hour at room temperature followed by conjugation to the secondary antibody Mach2 rabbit HRP-Polymer for 30 minutes at room temperature. Positive Control, the staining is correct.



Hela cell; 4% Paraformaldehyde-fixed; Triton X-100 at room temperature for 20 min; Blocking buffer (normal goat serum, C-0005) at 37°C for 20 min; Antibody incubation with (PALB2) polyclonal Antibody, Unconjugated (bs-0588R) 1:100, 90 minutes at 37°C; followed by a conjugated Goat Anti-Rabbit IgG antibody at 37°C for 90 minutes, DAPI (blue, C02-04002) was used to stain the cell nuclei.



Blank control: HeLa (blue), the cells were fixed with 2% paraformaldehyde (10 min) and then permeabilized with ice-cold 90% methanol for 30 min on ice. Isotype Control Antibody: Rabbit IgG (orange); Secondary Antibody: Goat anti-rabbit IgG-FITC (white blue), Dilution: 1:100 in 1 X

Important Note: This product as supplied is intended for research use only, not for use in human, therapeutic or diagnostic applications.

PBS containing 0.5% BSA ; Primary Antibody
Dilution: 1µg in 100 µL1X PBS containing 0.5%
BSA(green).