

bs-17893R**[Primary Antibody]****MTRF1L Rabbit pAb****BioSS**
ANTIBODIES

www.bioss.com.cn

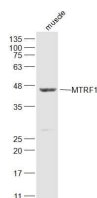
sales@bioss.com.cn

techsupport@bioss.com.cn

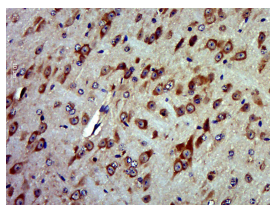
400-901-9800

— DATASHEET —

Host: Rabbit	Isotype: IgG	Applications: WB (1:500-2000)
Clonality: Polyclonal		IHC-P (1:100-500)
GeneID: 54516	SWISS: Q9UGC7	IHC-F (1:100-500)
Target: MTRF1L		IF (1:100-500)
Immunogen: KLH conjugated synthetic peptide derived from human MTRF1L: 301-380/380.		Reactivity: Mouse (predicted: Human, Rat, Rabbit, Pig, Cow, Dog, Horse)
Purification: affinity purified by Protein A		
Concentration: 1mg/ml		Predicted MW.: 40 kDa
Storage: 0.01M TBS (pH7.4) with 1% BSA, 0.02% Proclin300 and 50% Glycerol. Shipped at 4°C. Store at -20°C for one year. Avoid repeated freeze/thaw cycles.		Subcellular Location: Cytoplasm
Background: Mitochondrial DNA encodes 13 proteins that play essential roles in the respiratory chain, while all proteins involved in mitochondrial translation are encoded by nuclear genes that are imported from the cytoplasm. MTRF1L is a nuclear-encoded protein that functions as a releasing factor that recognizes termination codons and releases mitochondrial ribosomes from the synthesized protein (summary by Nozaki et al., 2008 [PubMed 18429816]).[supplied by OMIM, Nov 2010]		

— VALIDATION IMAGES —

Sample: Muscle (Mouse) Lysate at 40 ug
 Primary: Anti-MTRF1 (bs-17893R) at 1/300 dilution
 Secondary: IRDye800CW Goat Anti-Rabbit IgG at 1/20000 dilution
 Predicted band size: 40 kD
 Observed band size: 43 kD



Paraformaldehyde-fixed, paraffin embedded (Mouse brain); Antigen retrieval by boiling in sodium citrate buffer (pH6.0) for 15min; Block endogenous peroxidase by 3% hydrogen peroxide for 20 minutes; Blocking buffer (normal goat serum) at 37°C for 30min; Antibody incubation with (MTRF1) Polyclonal Antibody, Unconjugated (bs-17893R) at 1:400 overnight at 4°C, followed by operating according to SP Kit(Rabbit) (sp-0023) instructions and DAB staining.