
CD171/L1CAM Rabbit pAb

Catalog Number: bs-22918R

Target Protein: CD171/L1CAM

Concentration: 1mg/ml

Form: Liquid

Host: Rabbit

Clonality: Polyclonal

Isotype: IgG

Applications: WB (1:500-2000)

Reactivity: Human (predicted:Mouse, Rat)

Predicted MW: 138 kDa

Entrez Gene: 3897

Swiss Prot: P32004

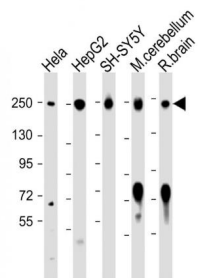
Purification: affinity purified by Protein A

Storage: 0.01M TBS (pH7.4) with 1% BSA, 0.02% Proclin300 and 50% Glycerol.

Shipped at 4°C. Store at -20°C for one year. Avoid repeated freeze/thaw cycles.

Background: L1cam (L1 cell adhesion molecule isoform 1 precursor) is an axonal glycoprotein belonging to the immunoglobulin supergene family. The ectodomain, consisting of several immunoglobulin-like domains and fibronectin-like repeats (type III), is linked via a single transmembrane sequence to a conserved cytoplasmic domain. This cell adhesion molecule plays an important role in nervous system development, including neuronal migration and differentiation. Mutations in the gene cause three X-linked neurological syndromes known by the acronym CRASH (corpus callosum hypoplasia, retardation, aphasia, spastic paraplegia and hydrocephalus). Alternative splicing of a neuron-specific exon is thought to be functionally relevant. [provided by RefSeq].

VALIDATION IMAGES



All lanes : Anti-L1CAM Antibody (C-term) at 1:2000 dilution Lane 1: Hela whole cell lysate Lane 2: HepG2 whole cell lysate Lane 3: SH-SY5Y whole cell lysate Lane 4: mouse cerebellum lysate Lane 5: rat brain lysate Lysates/proteins at 20 µg per lane. Secondary Goat Anti-Rabbit IgG, (H+L), Peroxidase conjugated at 1/10000 dilution. Predicted band size : 220 kDa Blocking/Dilution buffer: 5% NFDm/TBST.