

**bs-19808R**

**[ Primary Antibody ]**

## SLC22A7 Rabbit pAb

**Bioss**  
ANTIBODIES

www.bioss.com.cn

sales@bioss.com.cn

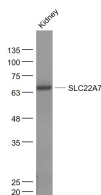
techsupport@bioss.com.cn

400-901-9800

### — DATASHEET —

<b>Host:</b> Rabbit	<b>Isotype:</b> IgG	<b>Applications:</b> WB (1:500-2000)
<b>Clonality:</b> Polyclonal		
<b>GeneID:</b> 10864	<b>SWISS:</b> Q9Y694	
<b>Target:</b> SLC22A7		
<b>Immunogen:</b> KLH conjugated synthetic peptide derived from human SLC22A7: 461-548/548.		
<b>Purification:</b> affinity purified by Protein A		<b>Reactivity:</b> Mouse (predicted: Human, Rat, Rabbit, Pig, Cow, Horse)
<b>Concentration:</b> 1mg/ml		<b>Predicted MW.:</b> 60 kDa
<b>Storage:</b> 0.01M TBS (pH7.4) with 1% BSA, 0.02% Proclin300 and 50% Glycerol. Shipped at 4°C. Store at -20°C for one year. Avoid repeated freeze/thaw cycles.		<b>Subcellular Location:</b> Cell membrane
<b>Background:</b> The protein encoded by this gene is involved in the sodium-independent transport and excretion of organic anions, some of which are potentially toxic. The encoded protein is an integral membrane protein and appears to be localized to the basolateral membrane of the kidney. Alternatively spliced transcript variants encoding different isoforms have been described. [provided by RefSeq, Jul 2008]		

### — VALIDATION IMAGES —



Sample: Kidney (Mouse) Lysate at 40 ug Primary:  
Anti- SLC22A7 (bs-19808R) at 1/300 dilution  
Secondary: IRDye800CW Goat Anti-Rabbit IgG at  
1/20000 dilution Predicted band size: 60 kD  
Observed band size: 64 kD