

**bs-1556R****[ Primary Antibody ]**

**Bioss**  
ANTIBODIES

www.bioss.com.cn

sales@bioss.com.cn

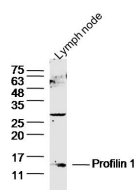
techsupport@bioss.com.cn

400-901-9800

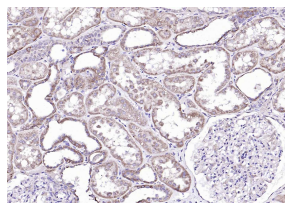
**Profilin 1 Rabbit pAb****— DATASHEET —****Host:** Rabbit**Isotype:** IgG**Clonality:** Polyclonal**GeneID:** 5216**SWISS:** P07737**Target:** Profilin 1**Immunogen:** KLH conjugated synthetic peptide derived from human Profilin 1: 41-140/140.**Purification:** affinity purified by Protein A**Concentration:** 1mg/ml**Storage:** 0.01M TBS (pH7.4) with 1% BSA, 0.02% Proclin300 and 50% Glycerol.

Shipped at 4°C. Store at -20°C for one year. Avoid repeated freeze/thaw cycles.

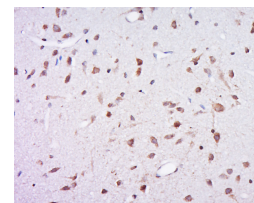
**Background:** Profilin 1 is a ubiquitous actin monomer-binding protein involved in actin polymerization in response to extracellular signals. Three profilin genes have been identified: profilin 1, 2, and 3. Profilin 1 is the most ubiquitous and abundant, and is highly expressed throughout development and adulthood in most tissues including brain. Profilin 2 is the neuronal specific isoform and profilin 3 is a testis specific isoform. Profilins of eukaryotic cells are small (12-15 kDa) cytoplasmic proteins that bind to actin monomers, polyphosphoinositides and polymers of L-proline. Profilins were shown to be important for normal cell proliferation, differentiation and motility. Deletion of profilin 1 gene leads to an embryonic lethal phenotype.

**Applications:** WB (1:500-2000)**IHC-P** (1:100-500)**IHC-F** (1:100-500)**IF** (1:100-500)**Flow-Cyt** (3ug/Test)**Reactivity:** Human, Mouse, Rat  
(predicted: Cow, Dog, Horse)**Predicted MW.:** 15 kDa**Subcellular Location:** Cytoplasm**— VALIDATION IMAGES —**

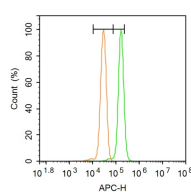
Sample: Lymph node (Mouse) Lysate at 30 ug  
Primary: Anti- Profilin 1 (bs-1556R) at 1/300  
dilution Secondary: IRDye800CW Goat Anti-Mouse IgG at 1/10000 dilution Predicted band size: 15 kD Observed band size: 15 kD



Paraformaldehyde-fixed, paraffin embedded (Human kidney); Antigen retrieval by boiling in sodium citrate buffer (pH6.0) for 15min; Block endogenous peroxidase by 3% hydrogen peroxide for 20 minutes; Blocking buffer (normal goat serum) at 37°C for 30min; Antibody incubation with (Profilin 1) Polyclonal Antibody, Unconjugated (bs-1556R) at 1:200 overnight at 4°C, followed by operating according to SP Kit(Rabbit) (sp-0023) instructions and DAB staining.



Tissue/cell: Rat brain tissue; 4% Paraformaldehyde-fixed and paraffin-embedded; Antigen retrieval: citrate buffer (0.01M, pH 6.0), Boiling bathing for 15min; Block endogenous peroxidase by 3% Hydrogen peroxide for 30min; Blocking buffer (normal goat serum, C-0005) at 37°C for 20 min; Incubation: Anti-PFN1 Polyclonal Antibody, Unconjugated(bs-1556R) 1:500, overnight at 4°C, followed by conjugation to the secondary antibody(SP-0023) and DAB(C-0010) staining



Blank control: A431. Primary Antibody (green line): Rabbit Anti-Profilin 1 antibody (bs-1556R)

**Important Note:** This product as supplied is intended for research use only, not for use in human, therapeutic or diagnostic applications.

Dilution: 1µg /10<sup>6</sup> cells; Isotype Control  
Antibody (orange line): Rabbit IgG . Secondary  
Antibody: Goat anti-rabbit IgG-AF647 Dilution:  
1µg /test. Protocol The cells were fixed with 4%  
PFA (10min at room temperature)and then  
permeabilized with 0.1% PBST for 20 min at  
room temperature. The cells were then  
incubated in 5%BSA to block non-specific  
protein-protein interactions for 30 min at room  
temperature .Cells stained with Primary  
Antibody for 30 min at room temperature. The  
secondary antibody used for 40 min at room  
temperature. Acquisition of 20,000 events was  
performed.