

bs-1339R

[Primary Antibody]

CK18 Rabbit pAb

Bioss
ANTIBODIES

www.bioss.com.cn

sales@bioss.com.cn

techsupport@bioss.com.cn

400-901-9800

— DATASHEET —

Host: Rabbit

Isotype: IgG

Clonality: Polyclonal

GeneID: 3875

SWISS: P05783

Target: CK18

Immunogen: KLH conjugated synthetic peptide derived from human CK18: 301-423/430.

Purification: affinity purified by Protein A

Concentration: 1mg/ml

Storage: 0.01M TBS (pH7.4) with 1% BSA, 0.02% Proclin300 and 50% Glycerol.
Shipped at 4°C. Store at -20°C for one year. Avoid repeated freeze/thaw cycles.

Background: KRT18 encodes the type I intermediate filament chain keratin 18. Keratin 18, together with its filament partner keratin 8, are perhaps the most commonly found members of the intermediate filament gene family. They are expressed in single layer epithelial tissues of the body. Mutations in this gene have been linked to cryptogenic cirrhosis. Two transcript variants encoding the same protein have been found for this gene. [provided by RefSeq, Jul 2008]

Applications: WB (1:500-2000)

IHC-P (1:100-500)

IHC-F (1:100-500)

IF (1:100-500)

Flow-Cyt (0.2µg /test)

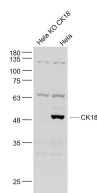
ICC/IF (1:100)

Reactivity: Human, Rat
(predicted: Mouse, Rabbit, Chicken, Dog)

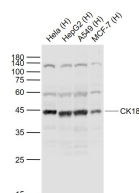
Predicted MW.: 48 kDa

Subcellular Location: Cytoplasm ,Nucleus

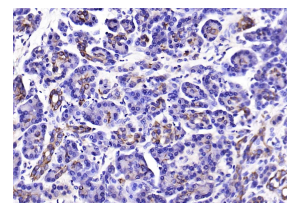
— VALIDATION IMAGES —



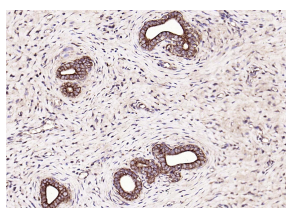
Sample: HeLa KO CK18 (Human) Cell Lysate at 30 ug
HeLa(Human) Cell Lysate at 30 ug
Primary: Anti-CK18 (bs-1339R) at 1/1000 dilution
Secondary: IRDye800CW Goat Anti-Rabbit IgG at 1/20000 dilution
Predicted band size: 48 kD
Observed band size: 48 kD



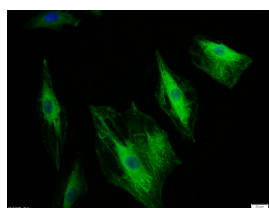
Sample: Lane 1: HeLa (Human) Cell Lysate at 30 ug
Lane 2: HepG2 (Human) Cell Lysate at 30 ug
Lane 3: A549 (Human) Cell Lysate at 30 ug
Lane 4: MCF-7 (Human) Cell Lysate at 30 ug
Primary: Anti-CK18 (bs-1339R) at 1/1000 dilution
Secondary: IRDye800CW Goat Anti-Rabbit IgG at 1/20000 dilution
Predicted band size: 48 kD
Observed band size: 45 kD



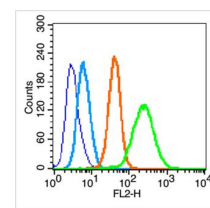
Paraformaldehyde-fixed, paraffin embedded (human pancreatic cancer); Antigen retrieval by boiling in sodium citrate buffer (pH6.0) for 15min; Block endogenous peroxidase by 3% hydrogen peroxide for 20 minutes; Blocking buffer (normal goat serum) at 37°C for 30min; Antibody incubation with (CK18) Polyclonal Antibody, Unconjugated (bs-1339R) at 1:200 overnight at 4°C, followed by operating according to SP Kit(Rabbit) (sp-0023) instructions and DAB staining.



Paraformaldehyde-fixed, paraffin embedded (rat uterus); Antigen retrieval by boiling in sodium citrate buffer (pH6.0) for 15min; Block



Tissue/cell: A549 cell; 4% Paraformaldehyde-fixed; Triton X-100 at room temperature for 20 min; Blocking buffer (normal goat serum, C-0005)



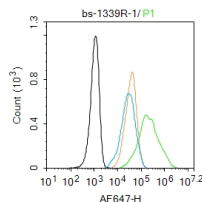
Blank control (blue line): Hep G2 (blue). Primary Antibody (green line): Rabbit Anti-CK18 antibody (bs-1339R) Dilution: 0.2µg /10⁶ cells; Isotype

Important Note: This product as supplied is intended for research use only, not for use in human, therapeutic or diagnostic applications.

endogenous peroxidase by 3% hydrogen peroxide for 20 minutes; Blocking buffer (normal goat serum) at 37°C for 30min; Antibody incubation with (CK18) Polyclonal Antibody, Unconjugated (bs-1339R) at 1:200 overnight at 4°C, followed by operating according to SP Kit(Rabbit) (sp-0023) instructions and DAB staining.

at 37°C for 20 min; Antibody incubation with (CK18) polyclonal Antibody, Unconjugated (bs-1339R) 1:100, 90 minutes at 37°C; followed by a FITC conjugated Goat Anti-Rabbit IgG antibody at 37°C for 90 minutes, DAPI (blue, C02-04002) was used to stain the cell nuclei.

Control Antibody (orange line): Rabbit IgG .
Secondary Antibody (white blue line): Goat anti-rabbit IgG-PE Dilution: 1µg /test. Protocol The cells were fixed with 70% ethanol (Overnight at 4°C) and then permeabilized with 90% methanol for 20 min at -20°C. Cells stained with Primary Antibody for 30 min at room temperature. The cells were then incubated in 1 X PBS/2%BSA/10% goat serum to block non-specific protein-protein interactions followed by the antibody for 15 min at room temperature. The secondary antibody used for 40 min at room temperature. Acquisition of 20,000 events was performed.



Blank control:Hela. Primary Antibody (green line): Rabbit Anti-CK18 antibody (bs-1339R) Dilution: 1µg /10⁶ cells; Isotype Control Antibody (orange line): Rabbit IgG . Secondary Antibody : Goat anti-rabbit IgG-AF647 Dilution: 1µg /test. Protocol The cells were fixed with 4% PFA (10min at room temperature)and then permeabilized with 0.1% PBST for 20 min at -20°C. The cells were then incubated in 5%BSA to block non-specific protein-protein interactions for 30 min at room temperature .Cells stained with Primary Antibody for 30 min at room temperature. The secondary antibody used for 40 min at room temperature. Acquisition of 20,000 events was performed.

— SELECTED CITATIONS —

- **[IF=10]** Liu-Gen Li. et al. A Dihydroartemisinin-Loaded Nanoreactor Motivates Anti-Cancer Immunotherapy by Synergy-Induced Ferroptosis to Activate Cgas/STING for Reprogramming of Macrophage. ADV HEALTHC MATER. 2023 Aug;;2301561 WB ;Mouse. 37567571
- **[IF=7.7]** Zhifu Cui. et al. Gga-miR-34b-3p targets calbindin 1 to regulate cellular calcium ion homeostasis during eggshell calcification in chicken uterus. INT J BIOL MACROMOL. 2025 Jan;286:138520 IF ;Chicken. 39647741
- **[IF=6.208]** Ting Lin. et al. CTH/H2S Regulates LPS-Induced Inflammation through IL-8 Signaling in MAC-T Cells. INT J MOL SCI. 2022 Jan;23(19):11822 IF ;Mouse. 36233122
- **[IF=5.8]** Huang Jing. et al. Effects of exposure to PM2.5 during pregnancy on the multigenerational reproductive outcomes of male mouse offspring and the role of Sertoli cells. ENVIRON SCI POLLUT R. 2023 Sep;;1-13 WB ;Mouse. 37697192
- **[IF=4.147]** Francesca Salamanna. et al. Development and characterization of a novel human 3D model of bone metastasis from breast carcinoma in vitro cultured. Bone. 2021 Feb;143:115773 IHC ;Human. 33249322