

**bs-1552R****[ Primary Antibody ]****CD55 Rabbit pAb****Bioss**  
ANTIBODIES

www.bioss.com.cn

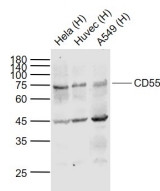
sales@bioss.com.cn

techsupport@bioss.com.cn

400-901-9800

**— DATASHEET —**

<b>Host:</b> Rabbit	<b>Isotype:</b> IgG	<b>Applications:</b> WB (1:500-2000)
<b>Clonality:</b> Polyclonal		<b>Reactivity:</b> Human, Mouse (predicted: Rat)
<b>GeneID:</b> 1604	<b>SWISS:</b> P08174	
<b>Target:</b> CD55		<b>Predicted MW.:</b> 35 kDa
<b>Immunogen:</b> KLH conjugated synthetic peptide derived from human CD55: 301-381/381.		<b>Subcellular Location:</b> Cell membrane
<b>Purification:</b> affinity purified by Protein A		
<b>Concentration:</b> 1mg/ml		
<b>Storage:</b> 0.01M TBS (pH7.4) with 1% BSA, 0.02% Proclin300 and 50% Glycerol. Shipped at 4°C. Store at -20°C for one year. Avoid repeated freeze/thaw cycles.		
<b>Background:</b> This gene encodes a glycoprotein involved in the regulation of the complement cascade. Binding of the encoded protein to complement proteins accelerates their decay, thereby disrupting the cascade and preventing damage to host cells. Antigens present on this protein constitute the Cromer blood group system (CROM). Alternative splicing results in multiple transcript variants. The predominant transcript variant encodes a membrane-bound protein, but alternatively spliced transcripts may produce soluble proteins. [provided by RefSeq, Jul 2014]		

**— VALIDATION IMAGES —**

Sample: Lane 1: HeLa (Human) Cell Lysate at 30 ug  
Lane 2: Huvec (Human) Cell Lysate at 30 ug  
Lane 3: A549 (Human) Cell Lysate at 30 ug  
Primary: Anti-CD55 (bs-1552R) at 1/1000 dilution  
Secondary: IRDye800CW Goat Anti-Rabbit IgG at 1/20000 dilution  
Predicted band size: 35 kDa  
Observed band size: 73 kDa

**— SELECTED CITATIONS —**

- **[IF=5.719]** Lingzi Feng, et al. A Closed-Loop Autologous Erythrocyte-Mediated Delivery Platform for Diabetic Nephropathy Therapy. NANOMATERIALS-BASEL. 2022 Jan;12(20):3556 FCM ;Rabbit. 36296745