

## Beta catenin Rabbit pAb

Catalog Number: bs-20598R

Target Protein: Beta catenin

Concentration: 1mg/ml

Form: Liquid

Host: Rabbit

Clonality: Polyclonal

Isotype: IgG

Applications: Flow-Cyt (1µg/Test), ICC/IF (1:100)

Reactivity: Human (predicted:Mouse, Rat, Pig, Sheep, Cow, Chicken, Dog, Horse)

Predicted MW: 86 kDa

Entrez Gene: 1499

Swiss Prot: P35222

Source: KLH conjugated synthetic peptide derived from human Beta catenin: 501-600/781.

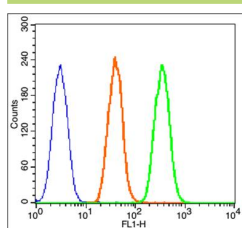
Purification: affinity purified by Protein A

Storage: 0.01M TBS (pH7.4) with 1% BSA, 0.02% Proclin300 and 50% Glycerol.

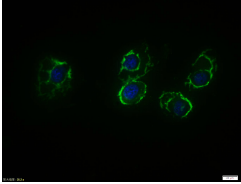
Shipped at 4°C. Store at -20°C for one year. Avoid repeated freeze/thaw cycles.

**Background:** The protein encoded by this gene is part of a complex of proteins that constitute adherens junctions (AJs). AJs are necessary for the creation and maintenance of epithelial cell layers by regulating cell growth and adhesion between cells. The encoded protein also anchors the actin cytoskeleton and may be responsible for transmitting the contact inhibition signal that causes cells to stop dividing once the epithelial sheet is complete. Finally, this protein binds to the product of the APC gene, which is mutated in adenomatous polyposis of the colon. Mutations in this gene are a cause of colorectal cancer (CRC), pilomatrixoma (PTR), medulloblastoma (MDB), and ovarian cancer. Three transcript variants encoding the same protein have been found for this gene.[provided by RefSeq, Oct 2009].

### VALIDATION IMAGES



Blank control(blue): Hela (fixed with 2% paraformaldehyde (10 min) , then permeabilized with 0.3%tritonx-100 for 5 min at room temperature). Primary Antibody:Rabbit Anti-Beta catenin antibody (bs-20598R); Dilution: 1µg in 100 µL 1X PBS containing 0.5% BSA; Isotype Control Antibody: Rabbit IgG(orange) ,used under the same conditions ); Secondary Antibody: Goat anti-rabbit IgG-FITC, Dilution: 1:200 in 1 X PBS containing 0.5% BSA.



Hela cell; 4% Paraformaldehyde-fixed; Triton X-100 at room temperature for 20 min; Blocking buffer (normal goat serum, C-0005) at 37°C for 20 min; Antibody incubation with (Beta catenin) polyclonal Antibody, Unconjugated (bs-20598R) 1:100, 90 minutes at 37°C; followed by a conjugated Goat Anti-Rabbit IgG antibody at 37°C for 90 minutes, DAPI (blue, C02-04002) was used to stain the cell nuclei.